



LAWRENCE COUNTY
CONSERVATION DISTRICT

Dirt On the District

Spring Tree Seedling Sale

April 27th wrapped up our Annual Tree Seedling Sale with the purchase of **4,070 trees and plants**. Sales included Evergreen / Hardwoods / Nut Trees along with Asparagus, Strawberries and Herb Collections. The District Team turned the warehouse into a Seedling Store for customer orders.



A Special Thank You to the donors this year who helped provide four fruit trees for a City of New Castle playground restoration.

Donations were received from: Joel Bender, Michelle Borden, Nikolaos Foukas, Melissa Hennon, Jeff and Lilian Shevitski and Lynn Unangst

2019 Envirothon

Congratulations to this year's

First Place Winners from

Lincoln High School - Birch Please!

They earned the Coveted Eagle Trophy and a \$100 cash reward.

The competition this year was met with high enthusiasm from 69 students from County

schools including Laurel, Wilmington, Union, Lincoln and New Castle.

Second place was Laurel FFA Team #1 and Third place to Wilmington Team #1.

Special acknowledgement to our Tied 4th place winners with NC Canes Team #5 and Wilmington Team #2.

Due to Prior Commitments, our First Place Winners forwarded the opportunity to our Second Place Winners to represent Lawrence County at the PA Envirothon.

Thank you to all who Participated and made the day a success!
More photos can be seen on our Facebook page.



June 2019
Volume 1, Issue 1



Lawrence County Conservation District

430 Court Street
New Castle, PA 16101

Phone: 724-652-4512
Fax: 724-657-2008

E-mail: lcd@lawrenceccd.org
Website: www.lawrenceccd.org



Environmental Outreach

The District provides environmental education programs to both adult and youth audiences. The district hosts a variety of programs such as **Nature and Geology Camps** but also conducts programs throughout the year by request.

To help fund educational programs, the district has an **Annual Spring Seedling Sale**. The sale is between January - March with orders being available for pick up in April.

Donations Are Needed

Consider a Donation to our **Nature and Geology Camps**.

Donations of Check or Cash can be mailed in or personally delivered to the Conservation Office.

Checks payable to *Lawrence County Conservation District or LCCD*

Credit Card Payments are also accepted through PayPal –

lcd@lawrenceconservationdistrict.org

Volunteers Needed

Nature and Geology Camp are in need of **Formal and Informal Educators** to offer **30 to 60 minute educational programs**.

Those offering general help are also welcome.

Please Contact
jshay@lawrenceccd.org
for a Volunteer Packet
Must have Clearances.

Summer Camps

Do you have a child that loves playing outside or is curious about nature? If this sounds like someone you know, then consider registering them for one of our Summer Camps put together by the Lawrence County Conservation District and the Department of Conservation and Natural Resources

Geology Exploration Camp

Geology Camp is a four day camp for kids **ages 12-13** to learn and discover the uniqueness and importance of Geology through a local park. Participants will engage in hands-on lessons, activities and hiking.

Geology Camp will be held
(Tuesday) **July 16** to (Friday) **July 19th**
at Cascade Park in New Castle, PA
from 9am - 2pm.

Geology Camp is limited to 14 participants and will be on a first come, first serve basis.

Registration due by June 21st 2019



Nature Camp

Nature Camp a week long Day Camp designed for children **ages 9 - 11**, where they can learn and discover the uniqueness and importance of water, soil, plants, wildlife and much more. We engage children in fun and interactive hands-on lessons, activities, games and crafts that allow them to explore their natural environment.

Nature Camp will be held
(Monday) **August 5th** to (Friday) **August 9th**
at Cascade Park in New Castle, PA
from 9am - 2pm.

Nature Camp is limited to 14 participants and will be on a first come, first serve basis.

Registration due by July 5th 2019



"Exposure to nature can reduce stress levels in children by 28%"

What you need to know for both camps:

Pick up and Drop off will be at Shelter #8 (old Stone Building) in the Grove Picnic Area.
You must provide transportation for your child.

Your child will need to bring a packed lunch each day. *The fee does not cover lunch.* Bottled water and snacks will be provided by the District. In addition, the camp is outdoors, so make sure your child is dressed appropriately. Flip-Flops are **NOT** permitted.

To Register: fill out the online application at www.lawrenceccd.org or detach the form at the end of this publication and mail in or bring in to the office with payment of \$40.00 per child. Cash or Check only. Checks are to be made out to "Lawrence County Conservation District".

We will contact you with additional information once your child is registered.

*A refund of tuition, due to cancellation, will be at the discretion of the Conservation District.
Also a \$20 service fee on all returned checks.*

Dirt, Gravel and Low Volume Roads

The District is looking forward to another successful construction season with our municipal partners. This year Shenango and Hickory Townships will be working with our office to complete over \$200,000 of road improvements. Through the District's administration of the State Conservation Commission and Center for Dirt and Gravel Road's Environmentally Sensitive Maintenance of Dirt, Gravel and Low Volume Road program we will continue our goal of completing projects that create better roads and cleaner streams.

Shenango Township will be taking on the task of converting the driving surface of Chewton West Pittsburg Road. Last year, the municipal road forces undertook the job of improving the drainage on a portion of the road that allows for the stormwater to be better managed and less sediment to wash into our waterways. This year's project will be a continuation of the efforts. For the first time in Shenango Township, they will be converting a badly damaged chip sealed surface to an aggregate road surface using the program's Driving Surface Aggregate (DSA). DSA is a blended mix of varied particle sizes to "lock up" with proper compaction to provide less sedimentation and a longer maintenance cycle.



Paver placement of DSA during the 2018 season in Mahoning Township

Hickory Township will be replacing a failing 60-inch pipe culvert on Lakewood Neshannock Falls Road with a new prefabricated footer arch culvert. Installation of the new structure will include providing a span over 12 ft. wide to allow for better stream flow through the pipe, better alignment to mitigate stream bank erosion and elimination of a large plunge pool at the outlet. The District will be providing the township with funding and technical assistance throughout the project anticipated to begin construction later this summer.



Existing badly perched pipe on Lakewood Neshannock Falls

Municipalities who are eligible and interested in completing a project should get in touch with our office. The 2020 grant round opens June 3rd.

Join us on Facebook and Instagram to follow this year's projects during construction.



Stabilization of an eroded portion of road bank on Chewton West Pittsburg completed last summer.

Dates to Remember

Come See Us At:

Wampum Trail Festival:

June 15th

Geology Camp:

July 16th -19th

Enon Valley Community Day:

July 20th

Nature Camp:

August 5th - 9th

Lawrence County Fair

August 12th - 17th

Senator Vogel's Senior Day:

September 20th



2019 District Staff

Joann McCready - District Manager
Becca Naber - District Technician
Travis Gates - Agriculture Technician
Mary Burris - Watershed Specialist
Jillian Court - E & S Technician
Jeannie Shay - Resource Technician

2019 Board Members

Phil Dean - Chairman
Dan Vogler - Vice-Chairman
Elmer Stewart - Secretary
Gary McConnell - Treasurer
Don Hoye - Public Member
Frank Romeo - Ag Member
Cliff Wallace - Ag Member
Blane Sturgeon - Associate Director

Manure Management Planning Workshop



March 27 –28th Travis Gates - our Agriculture Technician, held a workshop to help educate and assist farmers with their planning of Manure Management.

In Pennsylvania, any farmer applying manure to their land **must** have a written Manure Management Plan.

WE CAN HELP!

This spring 16 farmers took advantage of District's expertise helping to assure 1225 acres are now properly covered under a management plan.

Keep watch in December's newsletter about upcoming Free workshops in early 2020.

Parkapalooza

Are you Smarter than a 6th Grader?...

May 13th was the Annual Parkapalooza at Ewing Park for 6th Graders from Ellwood and Riverside schools. The students participated in several different educational stations including a "Till vs. No-Till" lesson put on by Mary Burris and Travis Gates from the District. They challenged the students to match up different tilling styles with the proper equipment. Jars of soil on top of water from a traditional tilled field and that of a no-till field were shown to illustrate the significant impact traditional tilling can have on the soil. Students were highly engaged and had fun trying to identify tilling equipment.



Provided by Dorothy Monahan

Annual Photo Contest

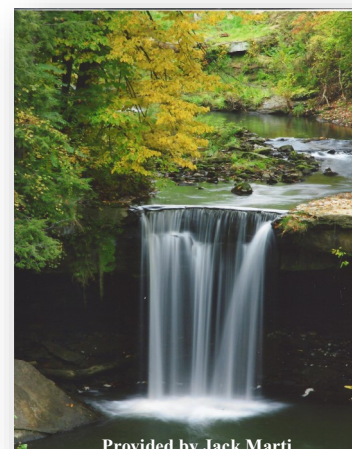
We are currently accepting entries for the **2019 Photo Contest**.

In an effort to support the conservation of our district's natural resources, we feel it is important to allow the public an opportunity to showcase what they feel are Lawrence County's finest natural resources.

To participate in the Annual Photo Contest you will find an entry form and contest rules on our website www.lawrencecd.org.

All entries can be mailed or personally delivered to the Lawrence County Conservation District Office (3rd floor of the county Courthouse).

Judging is done by leaders of the local art community.



Provided by Jack Marti



Don't forget to visit us at the
Lawrence County Fair
August 12-17



Tick Facts and Management

Pennsylvania is the worst state in the nation when it comes to tick-borne illnesses, with more than 10,000 Lyme disease cases reported according to the Centers for Disease Control.

A collection program through the **Department of Environmental Protection** is surveying tick behavior in the state. The five-year program (started in July 2018) is analyzing tickborne illnesses like Lyme disease, Powassan disease, and Ehrlichiosis by collecting samples in every county. Since then, the DEP has collected more than 3,663 adult blacklegged (deer) ticks for testing.

Facts:

- Ticks like wooded, humid areas, leaf litter, shrubs and long grasses. Open sunny areas are less likely to harbor ticks
- Ticks typically require 24-48 hours of feeding before they can successfully transmit infections like Lyme disease, so prompt removal is crucial.
- The blacklegged (deer) tick is active year-round, including the winter, as long as the temperatures are above freezing.
- Opossums eat ticks in abundance. Due to their low body temperature (90-99° F) it is very rare for an opossum to contract rabies and there is no evidence that they carry nor contract Lyme Disease.



Black Legged (Deer) Tick

**Information on ticks and tickborne diseases, visit the Centers for Disease Control and Prevention's website.
Information on Lyme Disease, visit the Department of Health's Lyme Disease webpage.

"Opossums act like little vacuum cleaners when it comes to ticks – with a single opossum hoovering up and killing an estimated 5,000 ticks in a season."



PERMETHRIN FACT SHEET

DID YOU KNOW??

WHAT IS PERMETHRIN?

- It is a stable (synthetic) form of an insecticidal compound produced by the chrysanthemum flower.
- It is commonly used to treat lice (Nix 1% shampoo) and scabies infections (5% cream).
- It biodegrades quickly in contact with soil and water.
- It is odorless and will not stain clothing.

HOW WELL DOES IT WORK?

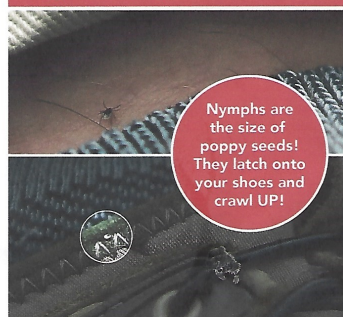
- It has been used as a clothing treatment to prevent bites from ticks, flies, and mosquitoes since the 1970s, and used by the military since the 1990s.
- It provides a quick tick knock-down effect – both repels and kills.
- A URI study found that people wearing permethrin-treated sneakers and socks were 73.6 times less likely to have a tick bite than those wearing untreated footwear.
- Each at-home treatment lasts for roughly 3-4 weeks (with washing!).
- Commercially-treated clothes can last up to 70 washes.

SHOULD I BE CONCERNED ABOUT USING THIS CHEMICAL?

- Permethrin is over 2,250 times more toxic to ticks than humans.
- Put directly on the skin, typically less than 1% of active ingredient is absorbed into the body; DEET can be absorbed at over 20 times that rate.
- Exposure risk of permethrin-treated clothing to toddlers is 27 times below the EPA's Level of Concern (LOC).
- A 140-pound person would have no adverse health effects if exposed to 32 grams of permethrin/day. There is less than 1 gram of permethrin in an entire bottle of clothing treatment.
- Permethrin is pregnancy category B (showing no evidence of harm to fertility or fetus).



Treating your shoes with permethrin repellent is TickSmart and should be done every month throughout the spring and summer.



Nymphs are the size of poppy seeds! They latch onto your shoes and crawl UP!



****Caution:** Permethrin won't hurt humans or dogs but it is harmful to bees, fish, and aquatic insects – do not spray clothing near flowers or water sources. Do not allow cats near permethrin-treated clothing until it has fully dried.

Sources:
United States Environmental Protection Agency. 2006. Permethrin Facts. http://www.epa.gov/oppsrrd1/REDs/factsheets/permethrin_fs.htm
Toynnton K, Luukinen B, Buhl K, Stone D. 2009. Permethrin General Fact Sheet; National Pesticide Information Center, Oregon State University Extension Services. <http://n-pic.orst.edu/factsheets/PermGen.html>
Miller NJ, Rainone EE, Dyer MC, Gonzalez ML, Mather TN. 2011. Tick bite protection with permethrin-treated summer-weight clothing. J. Med. Entomol. 48(2):327-333. http://www.tickencounter.org/pub/tick_repellent_clothing.pdf

New Staff Technicians

Please welcome to the Team **Jillian Court** - Erosion & Sedimentation Technician and
Jeannie Shay - Outreach and Resource Technician



Jillian is a Graduate of Allegheny College and has a B.S. in Environmental Science. Prior to the Conservation District, Jillian worked as an Environmental Field Engineer for a demolition company in Charlotte, NC. Upon moving back home she accepted a position at the Ellwood City Area Chamber of Commerce. She was named one of **2019's Top 5 Under 40 of Lawrence County**. Dedicated to her hometown, Jillian is the Volunteer Director of Ellwood City Community Enrichment, a subsidiary of the Chamber, which coordinates the Lawrence County Earth Day Celebration, the Summer Concert Series, and the Storytelling Festival.

Her expertise will be an asset to the Erosion and Sedimentation program. Her role as the new E&S Technician will fill the void left by Dave Bednar. Environmental Protection is her passion and she cannot wait to begin this new journey. We welcome her positivity and dedication to her new position as part of our team.

Jeannie is a Slippery Rock University Graduate with a B.S. in Environmental Education and diverse level of experience. For the past 12 years, Jeannie held a position at a State Farm Insurance Agency as the office manager and sales leader. Though she loved her career, she always kept her eyes open to new opportunities. Due to involvement with Internships at Moraine Preservation Fund and Lutherlyn Environmental Program, including one here at the District back in 2002-2003, Jeannie has developed a passion for our Natural Environment here in the County. She is a Lawrence County native and life time advocate of Conservation. We are certain her fresh outlook will be an asset to our marketing, outreach and education. Already she has helped develop a District Brochure and is the Editor of the Quarterly Newsletter.



Summer Camp Registration Form

Parent / Guardian _____

Camper's Name _____

Street _____

City _____

State _____ ZIP _____

E-Mail _____

Phone _____

Birth Date _____ Grade _____

School Attended _____

Mail Application form and payment to:
Lawrence County Conservation District
430 Court Street
New Castle, Pa 16101

Geology Camp ☐

Open to ages 12-13

Due by June 21st 2019

T-Shirt Size:

**Please Circle size requested*

Youth Small

Youth Medium

Youth Large

Adult Small

Adult Medium

Adult Large

☐ **Nature Camp**

Open to ages 9-11

Due by July 5th 2019



LAWRENCE COUNTY
CONSERVATION DISTRICT