



LAWRENCE COUNTY  
CONSERVATION DISTRICT

## Dirt On the District

December 2019  
Volume 1, Issue 3

### Spring Tree Seedling Sale

Every year the Conservation District distributes thousands of trees, shrubs and plants through our **Tree Seedling Sale**.

Early February we will start to advertise the varieties that will be available. Sale will include Evergreens, Hardwoods and Nut Trees along with fruit plant options and Herb collections.

To be added to the mailing list, please call the office or simply send an email to [lcd@lawrenceccd.org](mailto:lcd@lawrenceccd.org). Order forms will be made available on our Website for your convenience as well.

*Proceeds from the sale fund all of our annual Education Programs.*

### Annual Photo Contest

We are still accepting entries for the  
**2019 Photo Contest.**

**Entries will be accepted until  
January 17th, 2020**

To participate in the Annual Photo Contest  
you will find an entry form and contest  
rules on our website  
[www.lawrenceccd.org](http://www.lawrenceccd.org) .

All entries can be mailed or personally  
delivered to the Lawrence County  
Conservation District Office.

Judging is done by leaders of the  
local art community.



Provided by Denise Guthery



Provided by Kelly Hegel



### **Lawrence County Conservation District**

430 Court Street  
New Castle, PA 16101

Phone: 724-652-4512  
Fax: 724-657-2008

E-mail: [lcd@lawrenceccd.org](mailto:lcd@lawrenceccd.org)  
Website: [www.lawrenceccd.org](http://www.lawrenceccd.org)



Instagram  
LCCD\_DOD

### Environmental Outreach

The District provides environmental education programs to both adult and youth audiences. The district hosts a variety of programs such as **Summer Nature Camps** but also conducts programs throughout the year by request.

To help fund educational programs, the district has an **Annual Spring Seedling Sale**. The sale is between January - March with orders being available for pick up in April.

### Donations Are Needed

Consider a Donation to our **Summer Nature Camps**.

Donations of Check or Cash can be mailed in or personally delivered to the Conservation Office.

Checks payable to *Lawrence County Conservation District or LCCD*

Credit Card Payments are also accepted through PayPal –

[lcd@lawrenceconservationdistrict.org](mailto:lcd@lawrenceconservationdistrict.org)

## Nature Camps - Save the Date



### Junior Camp

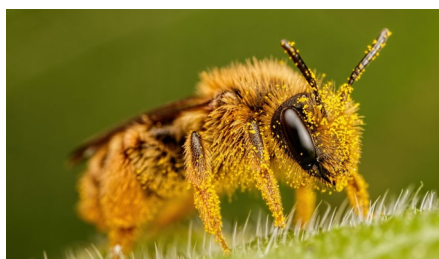
**Plans are to hold 2020 Jr. Nature Camp during the week of July 27th – 31st**  
This day camp will be open to students entering 3rd - 5th Grade.

Camp theme shall be  
**Survival of the Great Outdoors**

Explore how we need nature to survive and how they also need us.  
Learn crucial facts about pollinators and how human habits are affecting them.  
Some fun outdoor survival techniques will also be taught.

This will be a week you don't want to miss!

**Watch for more information in the March 2020 Newsletter and on our website.**



### Volunteers Needed

*If planning ahead for  
Summer of 2020...*

**Summer Nature Camps are  
always in need of  
Formal and Informal  
Educators to offer  
30 to 60 minute  
educational programs.**

**Those offering general help  
are also welcome.**

**Please Contact  
[jshay@lawrencecd.org](mailto:jshay@lawrencecd.org)  
for a Volunteer Packet  
Must have Clearances**

### **Did you Know....**

**Exploring Nature improves children's:**

- \*Awareness \*Reasoning \*Concentration \*Eyesight**
- \*Observational Skills \*Cognitive Abilities \*Problem-Solving**
- \*And Reduces Stress!!**

### Senior Camp

A Senior Nature Camp is also being offered in 2020,  
and will consist of an intense 3 day event.

Focus will be on survival skills when out hiking and  
will include study of wildlife survival when facing  
natural and human elements.

Plans are to hold Sr. Camp at  
McConnell's Mill State Park  
**July 14th - 16th**

This camp will be open to students  
entering 6th - 8th Grade.

More information will be posted in the spring.





# Dirt, Gravel and Low Volume Roads

## DGLVR Project Updates

The 2019 construction season proved to bring a varied number of new challenges, continuation of efforts and future planning activities. During this year, our office worked with several of our municipal partners. As the year comes to an end, we will take some time to reflect on the progress that was made to our local roadways to continue to deliver road and drainage improvements that provide us with cleaner streams.

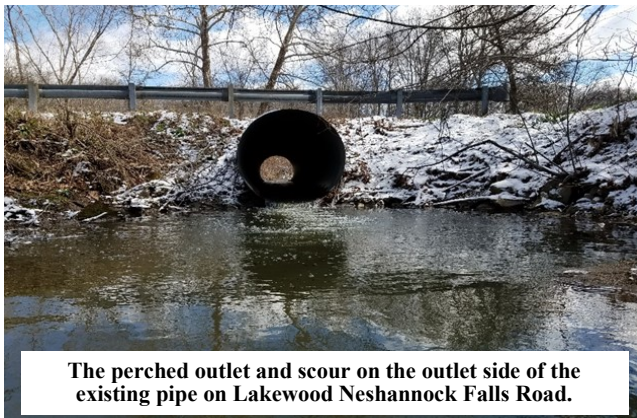


Shenango Township working to place a lift of DSA

Work continued in Shenango Township on Chewton West Pittsburg Road to convert an unstable aging chip seal surface over to a more sustainable aggregate surface. Working with contracted labor from Youngblood Paving, the municipal forces placed over 1600 linear feet of a specialized limestone blend called Driving Surface Aggregate (DSA) onto a prepared road surface. Crews “chewed” up the road with a piece of equipment called a road reclaimer and mixed in aggregate to allow for grading and establishment of a new road profile. The DSA was then placed in a six-inch lift ran through a paver and compacted by the Township road crew. Converting the road should allow for a longer maintenance cycle and less erosion to the adjacent waterway.

Pleased with the progress of the road over the last few construction seasons, Shenango Township and Becca Naber, Technical Advisor, have been working on plans for the placement of new drainage cross pipe and additional surfacing anticipated to be completed in the spring of 2020.

While the work in Shenango Township and planning activities were underway, the District continued efforts in Hickory Township to do more work in the Neshannock Creek Watershed.



The perched outlet and scour on the outlet side of the existing pipe on Lakewood Neshannock Falls Road.

This summer was spent working on the challenges associated with the design, permitting and plan for the installation of a new bankfull pipe scheduled to be installed early next summer on Lakewood Neshannock Falls Road.

Replacement of the existing structure will greatly improve the portion of the stream. Currently, the existing pipe is too small and creates frequent backwater situations that flood both the residential properties and cause down stream erosion of the stream channel. Installation of the proposed

twelve-foot bottom less aluminum arch pipe will allow the stream to flow under the road with less disturbance to the stream and the surrounding properties.

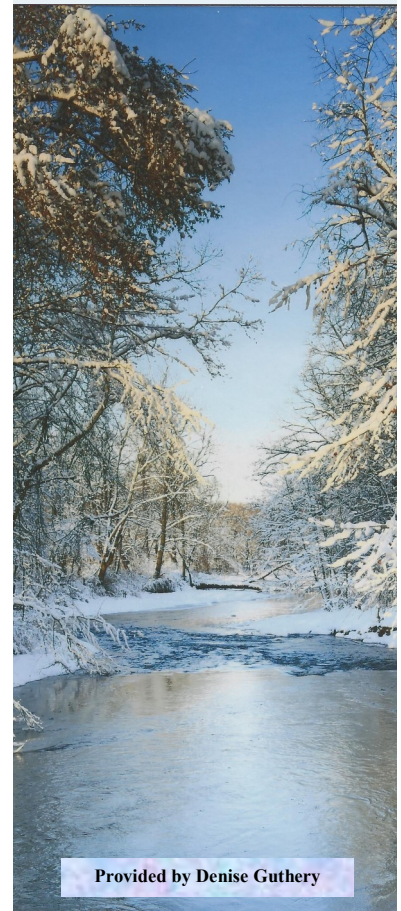
In addition to the work in Hickory and Shenango, Becca Naber is continuing to work with Mahoning and Plain Grove Townships to plan projects for upcoming years. Mahoning Township has an ongoing problematic situation with drainage on Evergreen Road and Plain Grove Township has requested assistance with a failing wetland crossing on McConnahay Road that will require detailed permitting and watershed analysis.

**If your municipality is interested in applying for funds for future work, the Penn State Center for Dirt and Gravel Roads will be announcing the 2020 training schedule in December.**

<https://www.dirtandgravel.psu.edu/>



-KAHLIL GIBRAN



Provided by Denise Guthery



## Edible Rain Garden

September saw finishing touches being put on the Edible Rain Garden at the Lower East Side Community Garden. A low, arched, ADA accessible bridge was added across the center of the garden and will connect ADA accessible permeable grass paver pathways throughout the garden. Many thanks to the talented Sean Kendall for building the bridge.

On September 14<sup>th</sup>, The Lower East Side Community Garden unveiled the new “flower” rain collection system. Students from George Junior Republic fabricated the flower from an old satellite dish with a grant arranged through The Hoyt Art Center.

Neighbors, public officials, and friends of the garden turned out to see the innovative water collection system unveiled.

Water will flow into each of two, two hundred fifty gallon storage tanks for use in the garden.



## Ag Encounter

Penn State Extension hosted their 21st Annual Ag Encounter at the Lawrence County Fairgrounds for the county’s 4th Grade students. The District was once again invited to offer an educational station. Travis Gates, Ag Technician, gave an informative lesson called “What’s in *Your* Water?”. This was an interactive opportunity for students to test various water samples and determine nitrate and phosphate levels and what is considered safe or harmful. Results proved surprising to students about the origin of some the water samples regarding the levels found. Travis further educated the students about what local farmers are doing to prevent nitrates and phosphates from entering our local waterways by use of Best Management Practices.

You can read more about Ag Encounter by reaching the article shared on our Facebook page.



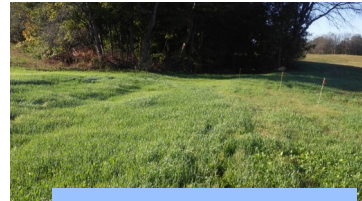


## Agriculture Best Management Practices

Wilson Farm, owned by Brad and Katie Wilson, suffered *Gully Erosion* due to excessive storm water run-off. As illustrated below, storm water flow would cause a significant gully through the field due to the lay of the land. This in turn influenced the field's drainage pattern. During heavy rainfall, the field would suffer loss of soil nutrients and ponded water would form at the bottom of the field resulting in difficult crop management.

Travis Gates, Ag Technician, assisted the Wilsons to obtain funding through a Growing Greener Grant. This grant provided \$11,952.15 in financial support. Travis assisted with as-builts and technical questions regarding equipment and supplies to be used as well as grant expectations. The project included a 1000ft *grass waterway* that changed storm water run-off to flow into a wooded area rather than into the farming fields where significant erosion and sedimentation was occurring.

As a result, the Wilsons can expect less ponding in the lower fields and healthy soil to stay intact. Healthy soil means cost saving for any farm. Also, less sediment will reach the Slippery Rock Creek increasing the health of our local waterways.



Final Results



Gully Erosion



During Construction



**Agriculture** employs more than six times  
as many workers as the U.S. automotive industry.

## Manure Management Workshops

All farms generating or applying manure  
Must have a Manure Management Plan (MMP).

We can help by offering a **FREE** workshop in the  
Spring of 2020, typically in March.

Those who attend will receive  
guided assistance in writing their own manure management plan.

Details will be posted on our social media and in the local newspapers.  
For additional information, contact Travis Gates at 724-656-2473.



Nature does not  
hurry, yet  
everything is  
accomplished.

- Lao Tzu



## Senator Vogel Senior Day Expo

On September 20th, the District hosted a table at the Senator Vogel Senior Day Expo held at Cascade Park. Joann McCready - District Manager, Mary Burris - Watershed Specialist, and Jillian Court - E&S Technician, offered many educational pamphlets, brochures and other hand outs. An *invasive plant* game was promoted to keep things interactive.

The day was filled with thousands passing through the event giving an opportunity to provide knowledge about the various ways the District enhances the County.



## Fall Festivals with Owl Education

This past fall season District technicians attended two local festivals.

Jeannie Shay, Education and Outreach Technician put together a display of owl related fun facts about *Native PA Owls*. Facts ranged from the different species, multiple eyelids, skeleton structure and an owl pellet display. A craft was offered to the youth and consisted of creating an owl out of cupcake liners. Participants could then decorate their own owl to take home.



On Sept 28th Ellwood City held their annual *Car Cruise Fall Fest* along the main streets of town. Jillian Court, E&S Tech and Travis Gates, Ag Tech, had fun educating the crowds on Pennsylvania owls and entertaining the kids. The day was warm and brought thousands to the event.

The quaint town of Wampum held their very first fall festival on October 12th. Mary Burris, Watershed Specialist and Jillian Court braved the cold rainy morning with optimism. Thankfully the weather improved bringing about a busy afternoon with lots of people curious about owls.

Both events gave our technicians opportunities to distribute district brochures and use their expertise to answer a broad range of questions. Many new contacts were obtained to be added to our newsletter mailing list.





## Weird but True

- In 1984, the National Christmas tree was lit on December 13th with temperatures in the 70's, making it one of the warmest tree lightings in history.
- Honey bees are the only insect that produces food consumed by humans. Each worker bee produces approximately 1/12 teaspoon of honey in its 6-8 week lifespan.
- Bats save U.S. Farmers over 3 Billion dollars a year with their abilities to eat abundant amounts of harmful insects. This reduces the amount of pesticides that are necessary and benefits the environment and agricultural economy.
- Owls do not have “eyeballs”, instead they have tubes. This means they can only look straight ahead. In order to see side to side, owls rotate their necks 270 degrees, 135 degrees on either side.
- One inch of rain equals 10 - 15 inches of snow.

### **2019 - Board of Directors**

Phil Dean - Chairman  
Dan Vogler - Vice - Chairman  
Elmer Stewart - Secretary  
Gary McConnell - Treasurer  
Don Hoye- Public Member  
Frank Romeo - Ag Member  
Cliff Wallace - Ag Member  
Blane Sturgeon - Associate Director

### **Conservation District Staff**

Joann McCready	District Manager
Becca Naber	District Technician
Travis Gates	Agriculture Technician
Mary Burris	Watershed Specialist
Jillian Court	E & S Technician
Jeannie Shay	Outreach/Education Technician

**To be added to our Email list, please  
call the office or email us at  
[lcd@lawrencecd.org](mailto:lcd@lawrencecd.org)**

**Help our Facebook Grow!!  
Currently we have over 680 followers on  
Facebook! Fantastic!  
Thank You!**

**Invite all of your family and friends to  
“Like” our page and see if we can achieve  
700 Followers before January 2020!!!**

**Would you like to see your business advertised  
in this email publication?  
Contact us for rates!  
[jshay@lawrencecd.org](mailto:jshay@lawrencecd.org)**

**The “Dirt on the District” is emailed quarterly to  
over 400 individuals and businesses  
in Lawrence County and is published on our  
social media outlets.**



LAWRENCE COUNTY  
CONSERVATION DISTRICT

# Kid's Corner!!

## Kid's Artwork Contest

Illustrate your version of a Favorite Outdoor Activity  
that helps you learn about the Environment!

Winners will receive an Award Certificate and  
Artwork will be published in the March 2020 Newsletter



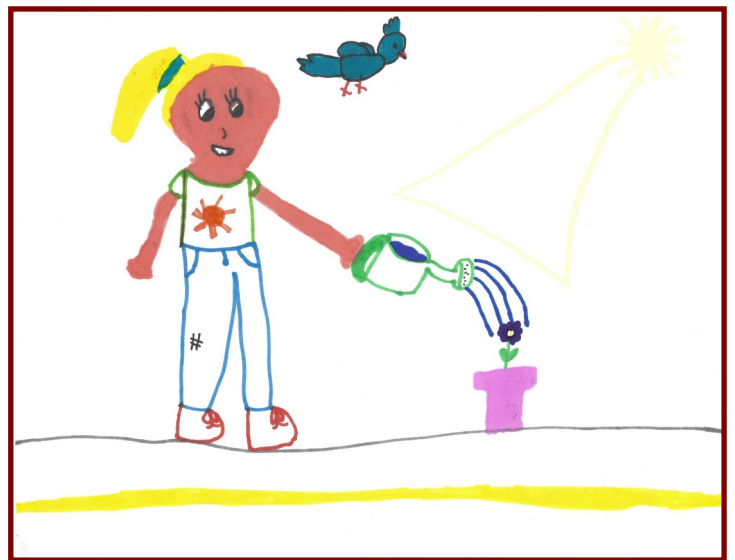
Please submit entries one of the following ways by  
**February 21st, 2020**

JPG scanned to email      jshay@lawrencecd.org

Mailed in                      430 Court Street  
New Castle, Pa 16101

Personally delivered      Conservation District Office  
located 3rd floor of courthouse

Examples



## Funny Farm

- \* What is the best time to see the Dentist..... Tooth-thirty!!
- \* A new law prevents Farmers from producing Round Bales of hay.....  
The State decided every cow deserves a Square Meal!!
- \* What is Santa's Favorite candy?? .....A Jolly Rancher!!

