



## Dirt On the District



### Spring Tree Seedling Sale

Every year the Conservation District distributes thousands of trees, shrubs and plants through our **Tree Seedling Sale**.

The annual sale is open for orders now till the **Deadline of April 3rd, 2020**.

2020 order forms have been mailed out. If you have not ordered from us in the past, you can access an order form at our website [www.lawrencecd.org](http://www.lawrencecd.org). Simply fill out the form and either mail in payment or use the PayPal option.

Tree seedlings available for 2020 include: Arborvitae, Balsam Fir, Black Spruce, Hemlock, Mugho Pine, Norway Spruce, Scotch Pine, American Redbud, Aronia (black Chokeberry), Elderberry, Kousa Dogwood, Persian Lilac, Red Twig Dogwood, Serviceberry, Shagbark Hickory, Sweetgum, and Whitespire Birch.

Additionally we are offering Asparagus, Everbearing Strawberries and Herb collections.

**Pick-up will be held Saturday April 25th, 2020 from 9:00am - 12:00pm at the County Warehouse, 202 Milton Street (next to Lawrence County Jail)**

*Proceeds from the Tree Seedling Sale fund all of our Environmental Education Programs.*

### Annual Nature Photo Contest Winners

The results of our **2019 Nature Photo Contest** are as follows:

#### **First Place**

**Judi Jackson with her "Pollen Feeding" photograph**

Second Place to Shirley Seymour for "Covered Bridge & Grist Mill".  
Third place goes to Denise Guthery with "Autumn on Countyline Rd".

Winners will receive prizes of  
\$100 for first place \$75 for second place and \$50 for third place.

Several Honorable Mentions will also receive a \$10 prize.

Congratulations to the winners!!

We appreciate all that participated.

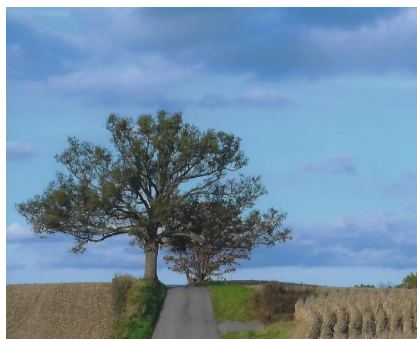
Thank you to our judges Kim Koller-Jones, Janet Kalajainen and  
Melissa Ciallella.



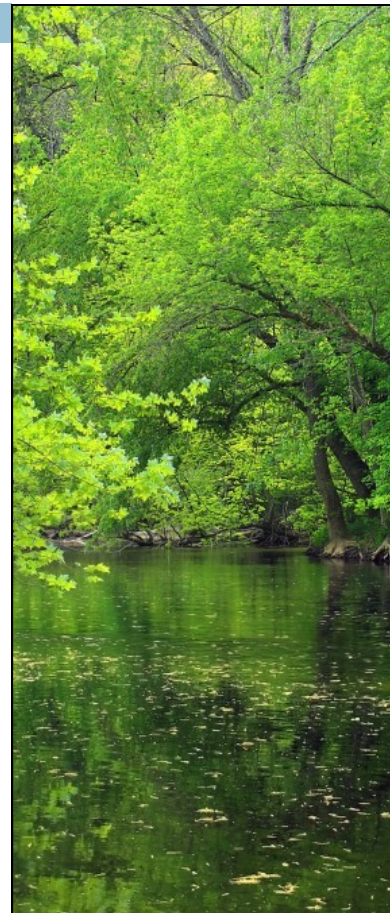
Judi Jackson "Pollen Feeding"



Shirley Seymour "Covered Bridge and Grist Mill"



Denise Guthery "Autumn on Countyline Road"



### **Lawrence County Conservation District**

430 Court Street  
New Castle, PA 16101

Phone: 724-652-4512

Fax: 724-657-2008

E-mail: [lcd@lawrencecd.org](mailto:lcd@lawrencecd.org)

Website: [www.lawrencecd.org](http://www.lawrencecd.org)



**FOLLOW US ON  
facebook**

**@Lawrence County  
Conservation District**



**Instagram  
LCCD\_DOD**



## Annual Luncheon



The Lawrence County Conservation District held its Annual Luncheon on Friday January 3rd, 2020 at the First United Methodist Church in New Castle. Over 40 guests attended including local, state and federal agencies, state legislators, County Commissioners and the New Wilmington FFA Team among other guests.

Gary McConnell – 2020 Board Chairman - led the luncheon with great optimism for the upcoming year.

Two awards were presented to county residents for their achievements in 2019.

Mary Burris, District Watershed Specialist, presented to Ken Rice Sr. (*photo to the upper left*) the **Urban Stewardship Award** for his implementation of the Lower East Side Community Garden. This garden now has the ability to feed over 70 families with fresh produce. The Conservation District has installed an edible rain garden in the Community Garden to control stormwater and provide additional food.



Board Member, Cliff Wallace, presented Ronald E. Martin (*photo to the upper right*) with the **Conservation Farm Award** for his continued work and improvements on his farm with the conservation of surrounding environment in mind.

A special award was presented to our longest rainfall monitor volunteer. Tim Sturgeon (*photo to middle right*) has been collecting rainfall data for 33 years.



District Manager, Jo Ann McCready, recognized the new County Commissioners – Loretta Spielvogel and Morgan Boyd.

Robert Del Signore and Dan Vogler were present as well and

offered a few words to the new commissioners and to the Conservation District regarding our past achievements and future outlook. State Representative Parke Wentling praised the work of the Conservation District and described state support for their work.

Speaker for the luncheon was the New Wilmington FFA team who presented their Demonstration with the topic of Maple Syrup. They did an excellent job of demonstrating ways to harvest and produce real Maple syrup. The team will be heading the PA Farm Show in Harrisburg for the state competition. Team members included: Romy Slick, Emilie Richardson, Kaity Jo Reimers, Callie Whiting – Alternates Renee Ealy and Emily Withers. Their FFA Advisor is Joanna McKelvey.

The luncheon was a great success and many new connections were made between county agencies, local residents and State departments. 2020 is an opportunity to foster these growing relationships and build a stronger community that continues to collaborate on projects that help with the protection, stewardship and conservation of the county's natural resources.





## Public Service Announcement

### Spotted Lanternfly (SLF)

Have you heard of the “Spotted Lanternfly” (SLF), it’s quickly becoming a popular topic of conversation. The spotted lanternfly (SLF) is an invasive pest from Asia that primarily feeds on *tree of heaven* (Ailanthus altissima) but can also feed on a wide variety of plants such as grapevine, hops, maple, walnut, fruit trees and others.

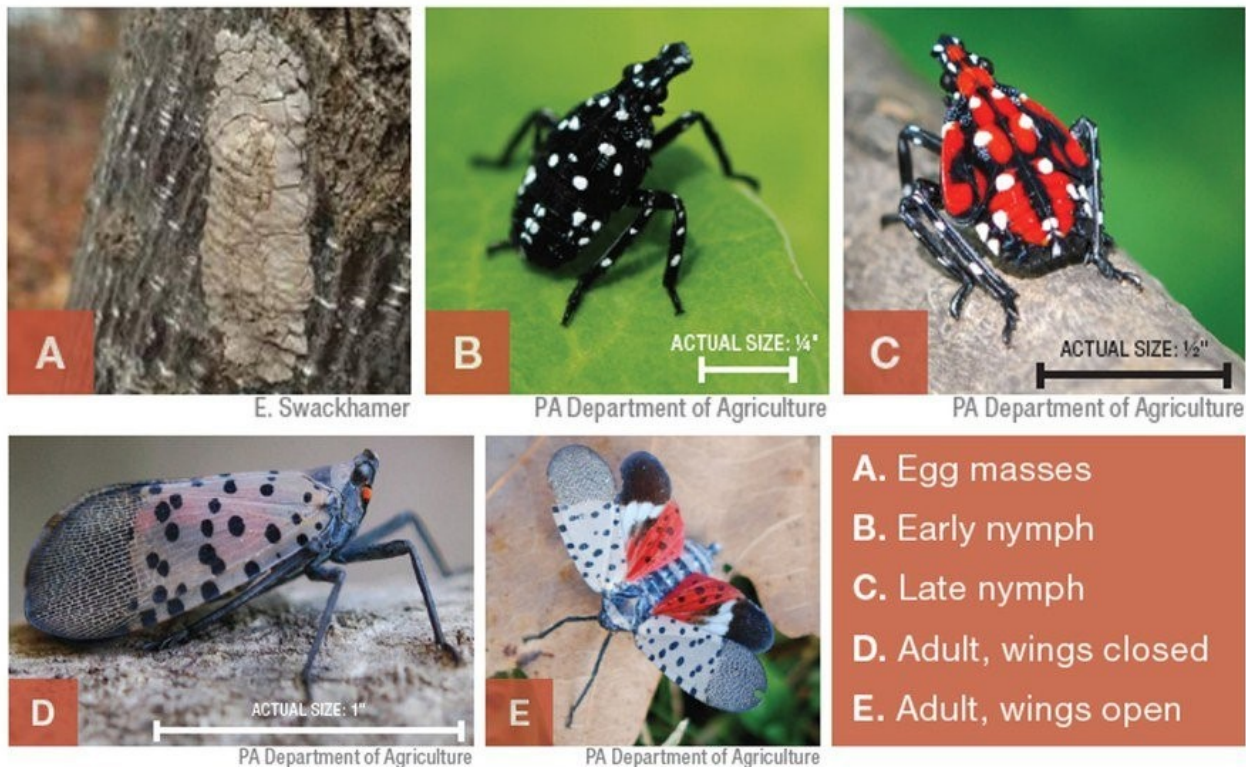
Due to the SLF’s ability to reproduce 30-50 individual insects per egg mass, they are becoming more than just a nuisance. Spotted lanternflies feed on the sap of a plant and when there are high populations of them, they can cause significant damage. When SLF feed on host plants, they suck in sap and excrete ‘honeydew’ which can attract other insects, and cause mold to grow on the tree. Although native insects also secrete “honeydew”, the size of SLF and the large populations that congregate in an area result in large accumulations of it. The sticky mess and the swarms of insects it attracts can significantly hinder outdoor activities. In Pennsylvania, where SLF populations are the densest, people can’t be outside without getting honeydew on their hair, clothes, and other belongings.

Because SLF feed on over 70+ plants, including important forestry and agricultural crops, it is estimated that this insect has the potential to cost Pennsylvania’s economy over \$300 million each year if not contained.

**March 3, 2020 Department of Agriculture added 12 Counties to Pennsylvania’s Spotted Lanternfly Quarantine. The new dozen counties are not completely infested, but rather have a few municipalities with a known infestation which led to a quarantine being placed on the entire county out of an abundance of caution. Allegheny, Beaver, Blair, Columbia, Cumberland, Huntingdon, Juniata, Luzerne, Mifflin, Northumberland, Perry, and York have been added to the quarantine for 2020.**

It is important to keep a watchful eye for this invasive insect. Additional information is widely available at the Pennsylvania Department of Agriculture - [www.agriculture.pa.gov](http://www.agriculture.pa.gov) and Penn State Extension - [www.extension.psu.edu/spottedlanternfly](http://www.extension.psu.edu/spottedlanternfly).

If you find Spotted Lanternfly, you should report it to the Pennsylvania Department of Agriculture online at <https://extension.psu.edu/spottedlanternfly> or call **1-888-4BAD-FLY**.



### Environmental Outreach

The District provides environmental education programs to both adult and youth audiences. The district hosts a variety of programs such as **Summer Nature Camps** but also conducts programs throughout the year by request.

To help fund educational programs, the district has an **Annual Spring Seedling Sale**. The sale is between February - March with orders being available for pick up in April.

### Donations Are Needed

Consider a Donation to our **Summer Nature Camps**.

Donations of Check or Cash can be mailed in or personally delivered to the Conservation Office.

Checks payable to *Lawrence County Conservation District or LCCD*

Credit Card Payments are also accepted through PayPal – [lcd@lawrenceconservationdistrict.org](mailto:lcd@lawrenceconservationdistrict.org)

### Volunteers Needed

**Summer Nature Camps are always in need of Formal and Informal Educators to offer 30 to 60 minute educational programs.**

**Those offering general help are also welcome.**

**Please Contact [jshay@lawrenceccd.org](mailto:jshay@lawrenceccd.org) for a Volunteer Packet**

**Must have Clearances Act 33 And Act 34**

## Summer Nature Camps

Do you have a child that loves playing outside or is curious about nature? If this sounds like someone you know, then consider registering them for one of our Summer Nature Camps put together by the Lawrence County Conservation District and the Department of Conservation and Natural Resources



### Junior Camp

Junior Nature Camp is a week long Day Camp designed for children entering **grades 3rd - 5th**, where they can learn and discover the uniqueness and importance of water, soil, plants, wildlife and much more. We engage children in fun and interactive hands-on lessons, activities, games and crafts that allow them to explore their natural environment.

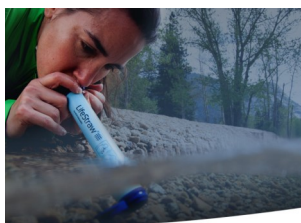
This year's Theme for camp is **Survival of the Great Outdoors**. Explore how we need nature to survive and how they also need us. Learn crucial facts about pollinators and how human habits are affecting them. Some fun outdoor survival techniques will also be taught.

This will be a week you don't want to miss!

Jr. Nature Camp will be held **(Monday) July 27th to (Friday) July 31st** at Ewing Park in Ellwood City, PA from 9am - 2pm.

Pick up and Drop off will be at Shelter #8

**Jr. Nature Camp is limited to 14 participants and will be on a first come, first serve basis. Registration due by June 26th, 2020.**



### Senior Camp

Senior Nature Camp is an intense three day event for students entering **grades 6th -8th**. Focus will be on survival skills when out hiking and will include study of wildlife survival when facing natural and human elements.

Sr. Nature Camp will be held **(Tuesday) July 14th to (Thursday) July 16th** at McConnell's Mill State Park from 9am - 3pm. Pick up and Drop off will be at the Kildoo Picnic Area.

**Sr. Nature Camp is limited to 14 participants and will be on a first come, first serve basis. Registration due by June 12th, 2020.**

#### What you need to know for both camps:

1. You must provide transportation for your child.
2. Your child will need to bring a packed lunch each day. The fee does not cover lunch.  
- Bottled water and snacks will be provided by the District.
3. Camp is outdoors, so make sure your child is dressed appropriately for both terrain and weather. Flip-Flops/Crocs are NOT permitted.

**To Register:** fill out the online application at [www.lawrenceccd.org](http://www.lawrenceccd.org) or detach the form at the end of this publication and mail in or bring in to the office with payment of \$40.00 per child. Cash or Check only.

**Checks are to be made out to "Lawrence County Conservation District".**

We will contact you with additional information once your child is registered.

*A refund of tuition, due to cancellation, will be at the discretion of the Conservation District. Also a \$20 service fee on all returned checks.*



## Dirt, Gravel and Low Volume Roads Program

Better roads, cleaner streams. A simple phrase, yet so relevant to the work being undertaken in the County funded by the Dirt, Gravel and Low Volume Road Program. Over the last year, the District has highlighted our partnerships with several of the municipalities here in the County and we are hoping to continue to complete more projects.

The spring construction season will include the continuation of efforts with Shenango Township on Chewton West Pittsburg Road. Shenango Township Municipal forces will work to improve the drainage on the next section of road and plans to install the program's specialized aggregate blend called DSA. Municipal forces will install several new cross pipes to better manage the stormwater on the road and discharge it in a stable fashion to the vegetated areas near an unnamed stream. Cooperatively, the project will address stormwater management, assist in minimizing erosion and provide a lower maintenance roadway.



*An undersized stream crossing on Evergreen Road in Mahoning Township.*

In addition to the work in Shenango Township, Becca Naber District Technical Advisor, will be working to finalize design of two stream crossings, cross pipe installation, road filling and off right of way improvements with Mahoning Township on Evergreen Road. Site constraints and aging undersized stream crossings cause have resulted in significant damage to this roadway through the years. Working with the Center for Dirt and Gravel Roads and RAR Engineering we will be pursuing improvements that will give the residents of Mahoning Townships a much safer more stable roadway. As a result of the improvements, future erosion of the road surface will be minimized. Two stream crossings plagued by undersized culverts will be replaced allowing for healthier segments of these waterways. Becca Naber anticipates construction on this project to start in the late summer of 2020.

Lastly, all of the permits and arrangements will be finalized early this summer to complete the stream culvert replacement on Lakewood Neshannock Falls Road. Hickory Township will be our partner in the installation of a bottomless arch culvert. Improvement of this structure will allow better stream flow under the roadway and allow for more connected flood plain.

Our office would like to encourage any and all municipalities who are interested in projects for the 2021 construction season to get in touch with our office and attend one of the upcoming trainings available at little or no cost through the Center for Dirt and Gravel Roads.

**For more information: <https://www.dirtandgravel.psu.edu/education-and-training>**

## **Erosion & Sedimentation Pollution Control**

The District maintains a Level II delegation with the Department of Environmental Protection to handle Pennsylvania's Title 25 Chapter 102 program. This chapter details issues dealing with erosion and sedimentation (E&S) pollution control for earthmoving activities and Post Construction Stormwater Management (PCSM).

In Pennsylvania it is required that all earthmoving activities implement Best Management Practices (BMPs) to minimize accelerated erosion during earth disturbances.

Activities permitted under the program also have to address stormwater following the completion of the activity. The primary purpose for implementation of E&S and PCSM BMPs are to protect the physical, chemical and biological integrity of the watershed where the activity is located.

The duties delegated to the District include determining adequacy to meet regulatory requirements, education/technical assistance and compliance inspection. Permitted sites are inspected on a regular basis; while non-permitted sites are inspected only on a complaint basis.

So, who needs a National Pollutant Discharge Elimination System (NPDES) Permit? Earth disturbance of an acre or more requires the landowner or developer to obtain a NPDES Permit to be approved before breaking ground. Permit applications will include an Erosion and Sedimentation (E&S) pollution control plan and PCSM plan.

Landowners or developers disturbing more than 5000 square feet but under an acre are only required to have an E&S plan in place to manage construction stormwater.



**Applications and information are available on the Department of Environmental Protection's website.**

**Landowners and developers can contact Jillian Court, E&S Technician [jcourt@lawrencecd.org](mailto:jcourt@lawrencecd.org), at the District with questions regarding what types of activities necessitate permitting.**

# 2020 Sponsors

## Bald Eagle Level- \$1,000

## Red Tailed Hawk Level - \$500

**\* Michael Joseph State Farm**

## Blue Heron Level - \$250

## Robin Level - \$100

**\* Ben Franklin's Grille & Taproom**

**\* Five Fillies Farm**

**\* Apple Castle**

**\* Central Heating and Plumbing**

The Lawrence County Conservation District Board of Directors and Staff would like to thank 2020 Sponsors for their generous donations. Education efforts are made possible with your support and help sustain our organization and benefit the community we serve. Our goal is to educate and promote interest in the conservation of our natural resources to all community members.

## Levels of Sponsorship



### **Bald Eagle Level \$1000**

- \* Social media "shout-out" on Facebook and Instagram
- \* Recognition in Quarterly Newsletter and Annual Report
- \* Advertisement on Nature Camp T-shirts and Envirothon T-shirts
- \* Free Advertisement in four Quarterly Newsletters

### **Red Tailed Hawk Level \$500**

- \* Social media "shout-out" on Facebook and Instagram
- \* Recognition in Quarterly Newsletter and Annual Report
- \* Advertisement on Nature Camp T-shirts and Envirothon T-shirts
- \* Free Advertisement in two Quarterly Newsletters

### **Blue Heron Level \$250**

- \* Social media "shout-out" on Facebook and Instagram
- \* Recognition in Quarterly Newsletter and Annual Report
- \* Advertisement on Nature Camp T-shirts

### **Robin Level \$100**

- \* Social media "shout-out" on Facebook and Instagram
- \* Recognition in Quarterly Newsletter and Annual Report

## Lawrence County Conservation District Sponsorship Form

### **Donor Information:**

**Business Name** \_\_\_\_\_

**Last Name, First Name** \_\_\_\_\_

**Street Address** \_\_\_\_\_ **City, State, Zip** \_\_\_\_\_

**Email** \_\_\_\_\_ **Phone** \_\_\_\_\_

**Donation Amount** (please circle one) :    **\$1,000**    **\$500**    **\$250**    **\$100**

*\* Please make check payable to **Lawrence County Conservation District***

*\* Any donations earning advertisement will be contacted for ad illustration.*



**Michael G. Joseph, Agent**  
1614 Highland Avenue  
New Castle, PA 16105  
Bus: 724-652-9806  
[www.agentmichaeljoseph.com](http://www.agentmichaeljoseph.com)

**It's why I'm here.**

Your home and car are more than just things. They're where you make your memories – and they deserve the right protection. I get it. It's why I'm here. **LET'S TALK TODAY.**

State Farm Mutual Automobile Insurance Company  
State Farm Fire and Casualty Company  
Bloomington, IL

1706811

*If Conservation of Natural Resources goes wrong, nothing else will go right.*  
- M.S. Swaminathan

### 2020 - Board of Directors

Gary McConnell - Chairman  
Don Hoye - Vice Chairman  
Frank Romeo - Secretary  
Cliff Wallace - Treasurer  
Don Vogler - Commissioner Member  
Elmer Stewart - Ag Member  
Phil Dean - Ag Member  
Blane Sturgeon - Associate Director

### Conservation District Staff

Joann McCready	District Manager
Becca Naber	District Technician
Travis Gates	Agriculture Technician
Mary Burris	Watershed Specialist
Jillian Court	E & S Technician
Jeannie Shay	Outreach/Education Technician

Would you like to see your business advertised in this email publication?  
Contact us for rates!  
[Jshay@lawrenceccd.org](mailto:Jshay@lawrenceccd.org)

The "Dirt on the District" is emailed quarterly to over 400 individuals and businesses in Lawrence County and is published on our social media outlets.



### 2020 Dates to Remember

#### Earth Day Celebration

April 18th

#### Tree Sale Pick-up

April 25th

#### Envirothon

May 1st

#### Park-a-palooza

May 11th

#### Lawrence County Fair

August 17th - 22nd

#### Senator Elder Vogel's

##### Senior Expo

September 18th

#### McConnell's Mill

##### Heritage Days

September 26th - 27th

Intelligence is the ability of a species to live in harmony with its environment.

-Paul Watson

[veganposters.com](http://veganposters.com)



## Kid's Corner!!



Ellwood/Connoquenessing Nest

- A bald eagle's nest is HUGE!!! The nests are called eyries. Eyries are two feet deep and at least five feet across and can easily weigh a ton! Nests are made of sticks and mud. Eagles often return to the same nest year after year.
- A female bald eagle will lay up to three eggs a year. Sadly, not all three will survive. Males and females both take turns incubating the eggs. While one is keeping the eggs warm, the other is out looking for food and nesting material.

I FINALLY UNDERSTAND WHY  
AMERICAN BALD EAGLES ARE  
ALWAYS PHOTOGRAPHED  
FROM THE SIDE



What is a ducks favorite food?

Quackers!

What falls but never hits the ground?

Temperature!

What is a Tornado's favorite game?

Twister

What animal needs a wig?

Bald Eagle!

## Summer Camp Registration Form

Parent / Guardian \_\_\_\_\_

Camper's Name \_\_\_\_\_

Street \_\_\_\_\_

City \_\_\_\_\_

State \_\_\_\_\_ ZIP \_\_\_\_\_

E-Mail \_\_\_\_\_

Phone \_\_\_\_\_

Birth Date \_\_\_\_\_

Grade Entering Fall 2020 \_\_\_\_\_

School Attended \_\_\_\_\_

Jr. Nature Camp ☐

Entering Grades 3rd - 5th

**Due by June 26th, 2020**

T-Shirt Size:

*\*Please Circle size requested*

Youth Small

Youth Medium

Youth Large

Adult Small

Adult Medium

Adult Large

☐

Sr. Nature Camp

Entering Grades 6th - 8th

**Due by June 12th, 2020**

Mail Application form and  
payment of \$40/child to:

Lawrence County Conservation District  
430 Court Street  
New Castle, Pa 16101  
724-656-2167