



LAWRENCE COUNTY
CONSERVATION DISTRICT

Dirt On the District



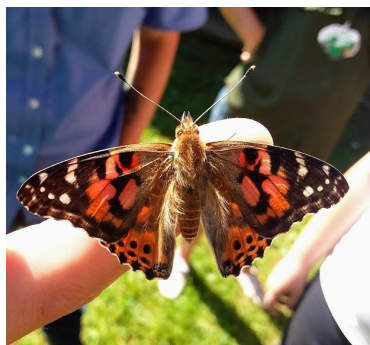
Summer Nature Camp

**This year's Nature Camp was a
Huge Success!**

We were thrilled to have such an enthusiastic group of campers ready to learn as much as they could in those five days.

Day 1 was full of fun as we all got to know each other and explore the park. Each camper had the chance to pick their own "Nature Name" for the week. From *Hazelnut* to *Sleeping Panda*, there were great imaginations at work.

Campers learned about Native and Invasive plants and what poisonous plants to avoid. This information proved useful on our Trail Hike using Native American trail navigation techniques.



Along the hike, campers were on a scavenger hunt keeping them aware of the surroundings.

Day 2 campers learned all about wildlife. The day started with a butterfly life cycle lesson and hands-on examples of each stage. As the program ended the campers got to participate in a release of painted lady butterflies! Later we discussed the different Cicadas that can be found and their different life cycles. On hand were an abundant amount of Cicada shells for everyone to investigate.

As the day ended we got up close with some animal pelts including a Bear rug and it's skull - courtesy of Ryan Shay.

Finally we all cooled off in the Big Run Creek and caught a crayfish for all to see and learn about.



September 2019
Volume 1, Issue 2

Lawrence County Conservation District

430 Court Street
New Castle, PA 16101

Phone: 724-652-4512
Fax: 724-657-2008

E-mail: lcd@lawrenceccd.org
Website: www.lawrenceccd.org



Instagram
LCCD_DOD

Nature Camp continued

Environmental Outreach

The District provides environmental education programs to both adult and youth audiences. The district hosts a variety of programs such as **Summer Nature Camps** but also conducts programs throughout the year by request.

To help fund educational programs, the district has an **Annual Spring Seedling Sale**. The sale is between January - March with orders being available for pick up in April.

Donations Are Needed

Consider a Donation to our **Summer Nature Camps**.

Donations of Check or Cash can be mailed in or personally delivered to the Conservation Office.

Checks payable to *Lawrence County Conservation District or LCCD*

Credit Card Payments are also accepted through PayPal –

lcd@lawrenceconservationdistrict.org



Day 4 had a focus on Forestry. The morning started with Tree Anatomy and Identification.

Later campers learned from a forester about how to calculate tree height and lumber amounts. Additional identification was taught along with notes about tree health.



Day 5 - Fishy Fishy Friday!! Watershed Specialist, Mary Burris started the morning with a hands-on lesson all about Macro Invertebrates. The campers loved both the collection and identification of aquatic critters.

Agriculture Technician, Travis Gates taught campers the basics of fishing.. His lesson was so great that most campers spent the rest of the day fishing and many were successful with a catch or two!!

Day 3 was “Weather Wednesday”! Campers were taught about wetlands and water runoff. Due to rain the day before, soil runoff was illustrated in the muddy creek.

Later they were taught about Storm Water management and how different surfaces either contribute to runoff or help prevent it.

The Highlight of the day was a presentation of Native American Artifacts and the opportunity for all to throw an Atlatl (Native American spear).



Check out our Facebook page for Additional Photos from the week

Volunteers Needed

If planning ahead for Summer of 2020...

Summer Nature Camps are always in need of Formal and Informal Educators to offer 30 to 60 minute educational programs.

Those offering general help are also welcome.

Please Contact jshay@lawrenceccd.org for a Volunteer Packet

Must have Clearances

Special Thanks to all of our presenters and donors during camp week!! Your time and expertise are appreciated and were a huge addition to the learning experience!

Andrea - Wish Upon a Butterfly

Jackie McCullough - Mercer County Conservation District

Monica King - Shenango River Watchers

Jim Schneider - Native American Artifacts and Atlatl

Katie Nowland—Buhl Farm Park

Dave Cole - DCNR Bureau of Forestry

**Michael Joseph State Farm - Balsam wood planes
PA Fish and Boat Commission - Fishing Equipment**

Dirt, Gravel and Low Volume Roads

Working near streams and trying to manage stormwater and all of its power is one of the most challenging aspects of the work involved with a successful road project. One of the principles of the program is to manage stormwater's erosive force. Erosion is a natural process; however, when completely unmanaged large stormwater flows in our streams can cause considerable damage to stream culverts.



District Technician, Becca Naber has begun to work with municipalities to install better in-stream culverts that allow for connection with the stream system including the grade and width of the channel.

Working with our municipal partners we installed our first upgraded structure late last fall. However, despite our best efforts, erosion from the overwhelming rain events resulted in damage earlier this summer to the new culvert pipe installed in Hickory Township near Reiber's Lane on Lakewood Neshannock Falls Road. A microburst storm produced enough rain to swell the small stream into a whirlpool of erosive force that moved a portion of the stream bank on the upstream side of the newly installed arch culvert.

The District Technician consulted with technical staff from the Center for Dirt and Gravel Roads and assisted the Township with stabilization of the culvert wing wall that was damaged in the storm by installing a modified mud sill. Mud sills may be adapted to various site conditions but include the anchoring of timbers/logs into the bank and stream bottom and provide stable high-water protection. Municipal forces in the Township were able to restore the erosion damage with no impact to the stream and the modified mud sill will hopefully need little to no maintenance in years to come.

Municipalities who are eligible and interested in completing a project can submit applications before October 31st, 2019.

Join us on Facebook and Instagram to follow projects during construction.

To make the problem even more complicated, it is very common here in Pennsylvania to need to upgrade or replace an existing stream structure with something more suitable because the pipe or culvert itself is contributing to the erosion problem.



Dates to Remember

Come See Us At:

**Senator Vogel's
Senior Day:**

September 20th

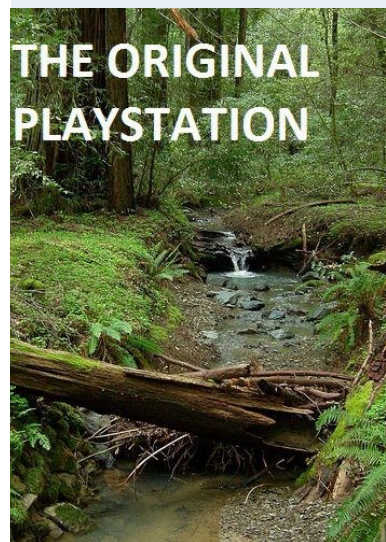
Ellwood Fall Festival

September 28th

Wampum Fall Festival

October 12th

**THE ORIGINAL
PLAYSTATION**



Edible Rain Garden

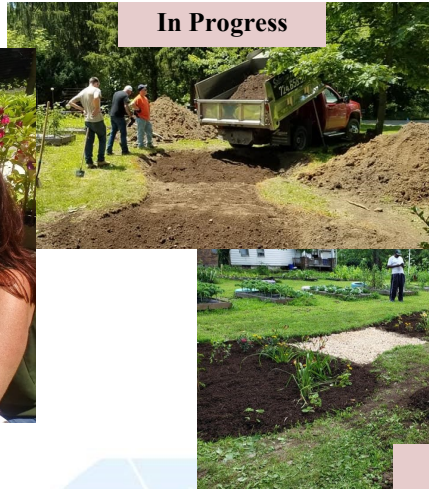
The Lawrence County Conservation District Watershed Specialist, Mary Burris, installed an “Edible Rain Garden” at the Lower East Side Community Garden in conjunction with the Lower East Side Neighborhood Watch, Tri-County CleanWays, and DON Enterprises. Volunteer labor and heavy machinery was also provided by Columbia Gas. The Community Garden feeds more than 50 families and the Edible Rain Garden will supply Blueberries, Elderberries, Aronia Berries, Strawberries, and Rhubarb. The Rain Garden serves as a storm water BMP to catch and slow runoff and will provide a location for education programs.

Financial and other support for this project is provided by the Pennsylvania Association of Conservation Districts, Inc. through a grant from the Pennsylvania Department of Environmental Protection under Section 319 of the Clean Water Act, administered by the U.S. Environmental Protection Agency.

Planning



In Progress



Completed



Mulching



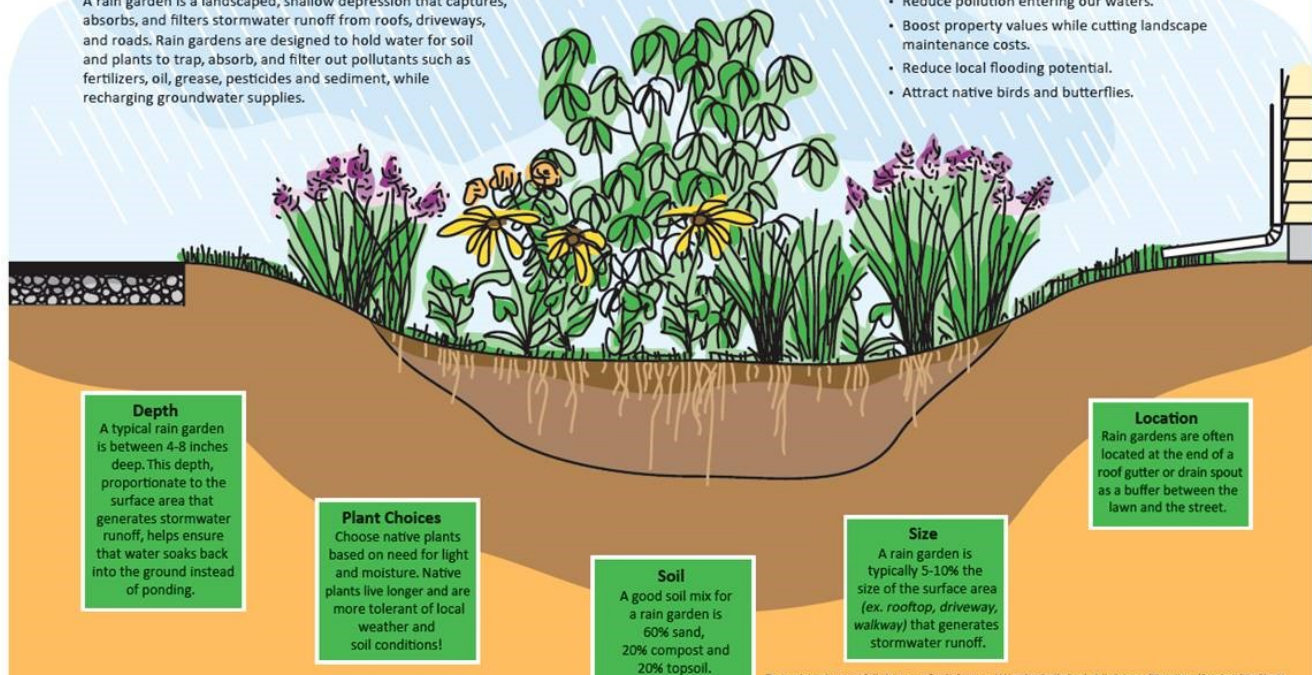
Rain Gardens Have Many Benefits

What is a Rain Garden?

A rain garden is a landscaped, shallow depression that captures, absorbs, and filters stormwater runoff from roofs, driveways, and roads. Rain gardens are designed to hold water for soil and plants to trap, absorb, and filter out pollutants such as fertilizers, oil, grease, pesticides and sediment, while recharging groundwater supplies.

Rain Gardens Help:

- Reduce pollution entering our waters.
- Boost property values while cutting landscape maintenance costs.
- Reduce local flooding potential.
- Attract native birds and butterflies.



This sign and rain garden were installed by the Longsight Township Environmental Advisory Council and has been funded by the League of Women Voters of Pennsylvania Citizen Education Fund through a Section 319 Federal Clean Water Act grant from the Pennsylvania Department of Environmental Protection, administered by the U.S. Environmental Protection Agency. Reproduced with permission by the Pennsylvania Department of Environmental Protection (www.dep.state.pa.us)

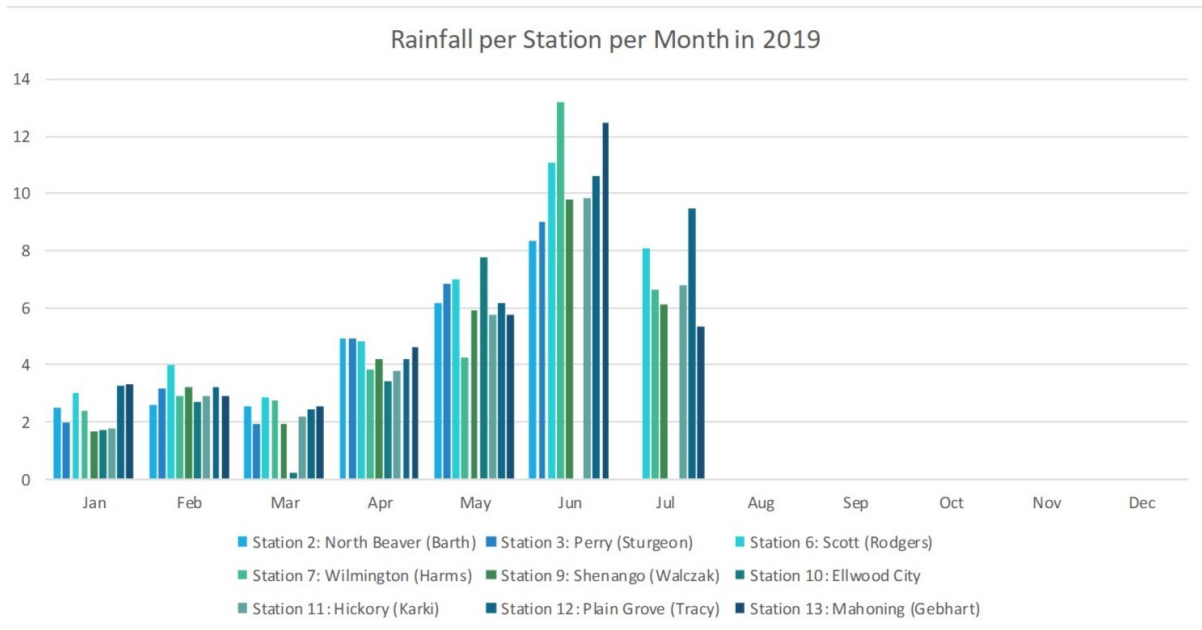
Rain Fall Statistics

Rainfall Monitoring

Currently, we have 9 volunteers (9 stations) in the program who collect monthly data and send it into the Conservation District where it is recorded and analyzed once a year.





This information helps us to understand the local weather patterns within the community, which can be beneficial for emergency planners and our farming community.

Below are the Rainfall Statistics through July of 2019. As you can see June was an extremely rainy month!



Are you interested in collecting rainfall data for Lawrence County?
If so, please contact Mary Burris, Watershed Specialist, at mburris@lawrencecd.org.

How to Winterize Your Rain Barrel

-  Disconnect from downspout or close downspout diverter valve.
-  Remove and clean spigot and reattach when barrel is dry.
-  Empty barrel, clean out if necessary.
-  Store in clean dry place if possible.



Update on Ag Best Management Practices

Grassycrest Farms, run by the Kind family, was a highlighted stop along the *National Conference of the Soil and Water Society* "Farm Tour". They were chosen for their recent completion of projects with cooperation of the Lawrence County Conservation District and NRCS. The Kind Family does an excellent job of protecting the local natural resources while effectively and efficiently running their Dairy operations.

Funding was provided through the DEP "Growing Greener Grant", and facilitated by Travis Gates, Agriculture Technician, at the District. Projects on the farm include a roofed "animal heavy use area" along with a concrete "scrape alley" to a roofed "dry stacking area". This design provides the livestock with a free range area and helps prevent soil disruption and mud from developing around the outside of the building. Along with NRCS funds, a riparian buffer was installed along the tributary to enhance stream ecology and reduce nutrient load that occurs from the manure. The Grant also provided for a clay lined manure storage.

The Kind family understands and embraces the idea that proactive measures today protects the legacy of the farm for generations to come.



Animal Heavy Use Area



Heavy use area along with scrape alley



View of the dry stacking area

New BMP Project

Another local farm embracing manure best management practices is the Sturgeon family at Camp Run Farms. Travis Gates, Ag Technician, is again facilitating the "Slippery Rock Watershed Grant" for the farm to implement a new Manure Storage Tank. The pre-construction meeting was a detailed conversation between the Engineer from Team Ag, Concrete contractor from Ohio Valley Concrete, local excavation company, along with Travis from the District and of course the Sturgeon family members. Meeting topics covered grant conditions and terms, logistics, realistic time frame and to-do lists that need completed before concrete can be poured. Cooperative planning will provide the best results.



2019 District Staff

Joann McCready - District Manager
Becca Naber - District Technician
Travis Gates - Agriculture Technician
Mary Burris - Watershed Specialist
Jillian Court - E & S Technician
Jeannie Shay - Education / Outreach Technician

2019 Board Members

Phil Dean - Chairman
Dan Vogler - Vice- Chairman
Elmer Stewart - Secretary
Gary McConnell - Treasurer
Don Hoye- Public Member
Frank Romeo - Ag Member
Cliff Wallace - Ag Member
Blane Sturgeon - Associate Director

Enon Valley Community Day



Our display illustrated how everything in a hamburger, and most items in general, can be traced back to the soil.

Jeannie Shay, Education and Outreach Technician, and Jillian Court, E&S Technician, kept the kids entertained and educated despite the morning rain and afternoon heat wave.

“Farm to Table”

was the theme of this year’s Enon Valley Community Day celebration.

The District participated with a table of fun for the kids offering “Edible Paint” and relating everything back to the soil.



Lawrence County Fair

Fair Week is always a great opportunity to educate more folks in our community about the various ways the District helps with the conservation of our soil and water resources.

All staff were on hand to offer their expertise to those with questions or interest into our programs.



Many new contacts were obtained through our sign up sheets and Photo Contest.

Travis Gates, Ag Technician, and Becca Naber, District Technician, put together detailed photos and descriptions of our Agriculture Projects and Dirt, Gravel and Low Volume Road Projects for the public to have a visual context on what we offer the county.

Annual Photo Contest

We are still accepting entries for the **2019 Photo Contest.**

**Entries will be accepted until
January 17th, 2020**

In an effort to support the conservation of our district’s natural resources, we feel it is important to allow the public an opportunity to showcase what they feel are Lawrence County’s finest natural resources.

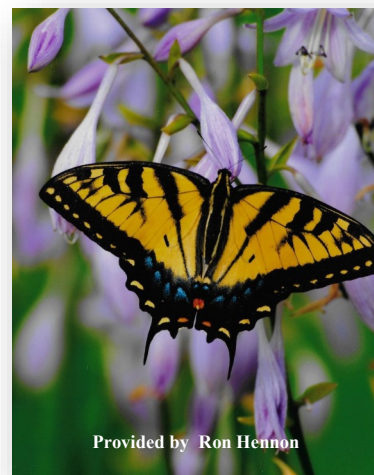
To participate in the Annual Photo Contest you will find an entry form and contest rules on our website www.lawrencecd.org.

All entries can be mailed or personally delivered to the Lawrence County Conservation District Office.

Judging is done by leaders of the local art community.



Provided by Denise Guthery



Provided by Ron Hennon