

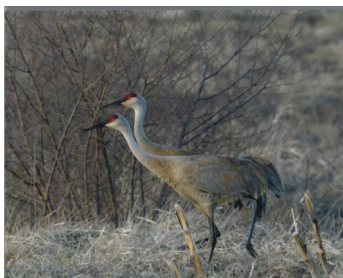


Dirt On the District

Annual Nature Photo Contest Winners



Shirley Seymour
"Blue Jay in Full Flight"



Dorothy Monahan
"Sandhill Elegance"



Denise Guthery "Fancy"

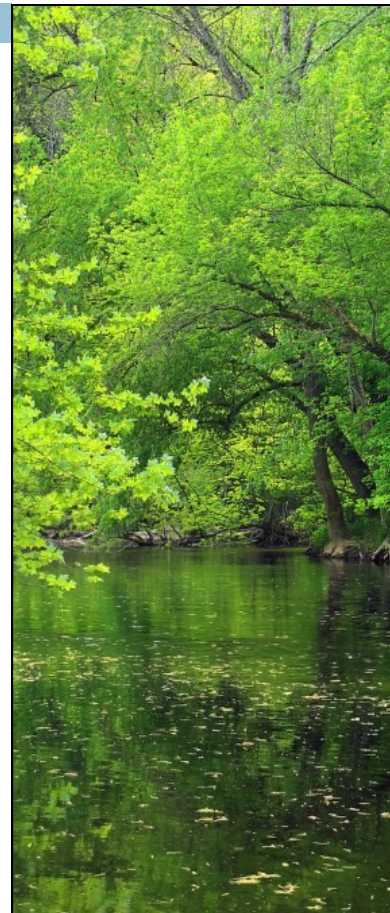
The results of our **2021 Nature Photo Contest** are as follows:

First Place
Shirley Seymour with
"Blue Jay in Full Flight" photograph

Second Place to Dorothy Monahan for "Sandhill Elegance".
Third place goes to Denise Guthery with "Fancy".

Winners were awarded prizes of \$100 for first place \$75 for second place and \$50 for third place. Five Honorable Mentions received a \$10 prize. All photos can be viewed on our website www.lawrenceccd.org.

Congratulations to the winners!!
We appreciate all that participated.



Lawrence County Conservation District

430 Court Street
New Castle, PA 16101

Phone: 724-652-4512

Fax: 724-657-2008

E-mail: lcd@lawrenceccd.org

Website: www.lawrenceccd.org

Spring Tree Seedling Sale

April 16th we held our Annual Seedling Sale Pick-up. Overstock of various seedlings were available to purchase and many took advantage.

The remainder of tree seedlings were donated to Villa Maria Farm.

Below is a highlight of what we sold to customers throughout the local community.

Evergreen	1,200
Deciduous Trees and Shrubs	2,923
Strawberry and Asparagus	589



*Proceeds from the Tree Seedling Sale fund all of
our Environmental Education Programs.*

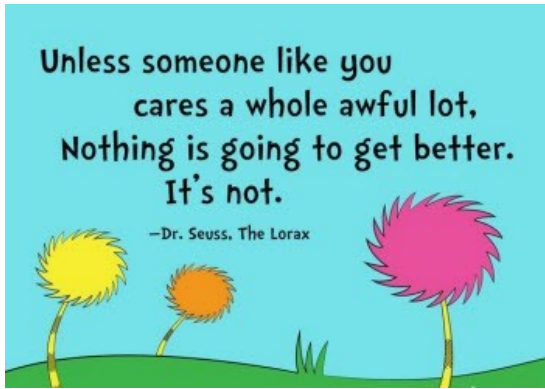


@Lawrence County
Conservation District



Instagram
LCCD_DOD

Lawrence County Earth Day 2022



The annual Lawrence County Earth Day Celebration was held on April 23rd in Ewing Park, Ellwood City and sponsored by Ellwood City Community Enrichment. Many vendors sold their handmade goods such as beeswax lotion bars, jams, wooden crafts, Tupperware, soaps, plants, herbs, goats milk lotion and candles. Educational exhibitors set up to talk about environmental topics like composting, recycling, trees, community gardens, water quality, bees, and native plants while demonstrating their importance with interactive activities.

The District participated at the event by setting up an educational board about Pennsylvania native fish species. Our display board had pictures of several fish species and the public were asked to guess which species were native to Pennsylvania. We also had a water cycle bracelet activity at our booth. Beads were used to show the paths water takes through its various states of solid, liquid and vapor, as it moves throughout Earth's systems including oceans, atmosphere, ground water, rain, streams, etc... There were ten bead colors and each color represented an aspect of the water cycle. For example, the sun (yellow), water vapor (clear), clouds (gray), rain (sparkling clear), snow (white), erosion (brown), oceans (dark blue), lakes (sparkling blue), puddles (sparkling brown), and plants (green) were all available to create a one of a kind bracelet.

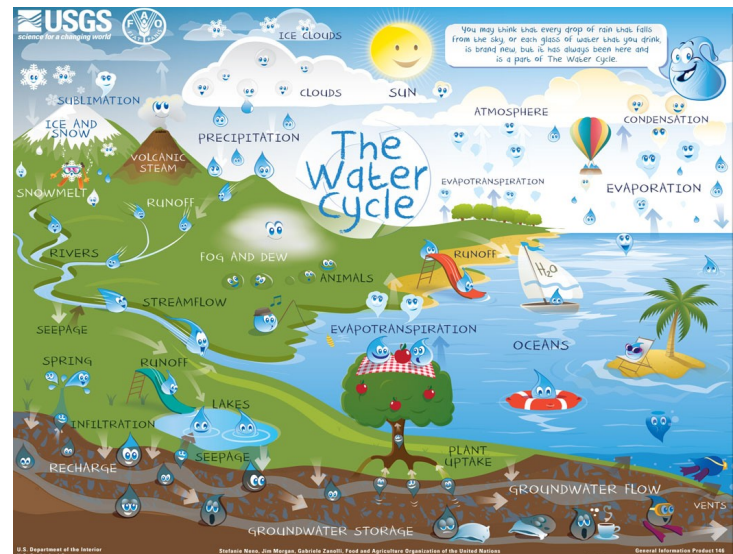


There were many interesting activities that occurred at the event including a composting seminar, a guided tour of the Ewing Park Nature Trail, and musical performances. The Wild World of Animals returned and showcased exotic animals such as a sloth, snake, and hawk. There was also a bounce house for children to enjoy all day long.

At the conclusion of the event, the Rotary Club of Ellwood City and Boy Scout Troop 806 sponsored a cleanup along a route from the park to downtown Ellwood City.

Visit Lawrence County Earth Day's [Facebook](#) page and check out all of the photos from the 2022 celebration!

Please contact Jillian Court at ecce1892@gmail.com if you would like to volunteer or participate as a vendor in Lawrence County Earth Day 2023.



Dirt Gravel and Low Volume Roads

Warm temperatures bring daffodils, spring turkey, trout season and our local municipalities tackling the challenges of what maintenance projects will be undertaken during this year's construction season. Often, spring showers highlight the areas on our local roadways that are being impacted by erosion and stormwater.

Spring has been a busy season for outreach in the Dirt, Gravel, Low Volume Road Program. District Technician, Becca Naber, has spent the last several months responding to outreach requests from several of our local municipalities inquiring about the DGLVR Program. Grant monies are available for roadways that are considered "low volume", or under 500 cars/day in addition to dirt and gravel surface roads.

The program is continuing to evolve and is furthering its development with the recent introduction of a new stream crossing replacement policy. Policy changes include requirements for assessment of waterways with an environmental emphasis during the engineering design process. In addition, the new policies are focused on the key process of flood flow passages, habitat restoration and creating culvert replacements that will hopefully have greater longevity with a lessened maintenance cycle.

If your municipality has drainage, stormwater problems or any areas where the roadways are impacted by our streams and wetlands, get in touch with **Becca Naber, District Technician /Technical Advisor at 724-656-2462 or bnaber@lawrencecd.org** to schedule a day in the field to see if the work could be a good future DGLVR project.



An undersized culvert in Wilmington Township was recently assessed by our staff with help from the Center for Dirt and Gravel Roads.

District Technician visits Geneva College

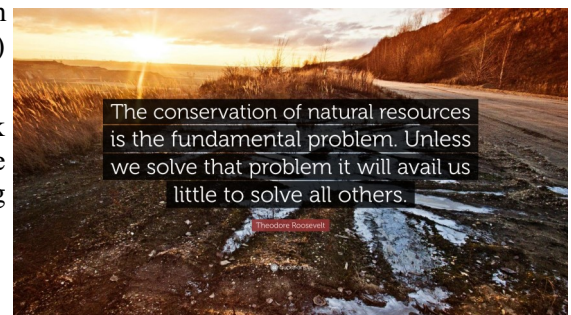
On a daily basis we all use roads, go to stores, head down to the local stream to fish after work and complete simple tasks like turning on the faucet to have a glass of water. Most of us do these things regularly without giving those tasks a passing thought. Most of the work to protect our natural resources is demonstrated in ways we commonly aren't even aware of as we go through our days.

During your next trip to a local stream to do some fishing or take a walk through a park take a few minutes to think about how public policy, laws and regulations influence those mundane tasks. Stormwater, public policy, regulations, engineering and how the Conservation District puts all of those concepts to work on a daily basis was the focus of the guest lecture at Geneva College.

Thanks to a collaborative effort with Jay Neikirk, Professor of Political Science at Geneva College, a group of students studying public policy, engineering, and environmental disciplines was introduced to how all types of public policy serve to protect our ability to enjoy our local waterways.

The focus of the session, presented by Lawrence Conservation District Technician Becca Naber, focused on several areas of stormwater regulation in Pennsylvania. Students were introduced to the importance and impacts of natural resources on our communities. Management of stormwater has direct impact on development in our communities, our drinking water supply, recreation, and infrastructure. Examples of the "day to day" implementation of local, state and federal regulations, statutes and laws were discussed with the students. In addition to the examples about regulatory implementation, Becca Naber, who also serves as the District's Dirt, Gravel, Low Volume Road program advisor introduced the students to concepts around program policy implementation and provided them with highlights of implementation of the concepts in the field that have been completed in both the DGLVR Program and through the District's administration of the Chapter 102 National Pollutant Discharge Elimination System (NPDES) program.

Staff of the Conservation District welcomes the opportunity to outreach and work with our local community to continue our mission and encourage future generations to embrace stewardship. Our thanks to Professor Neikirk for inviting our staff to discuss these issues with the students.



2022 County Envirothon Competition



1st Place Winners - Wilmington Team 2

DJ Miller, Evin Richardson, Hunter Jones,
Faith Jones, Shane Bayuk

Team Advisor - Joanna McKelvey

On May 3rd, the Lawrence County Conservation District hosted the **Annual Envirothon Competition** at Shenango Park in New Castle. Thirteen teams representing Laurel, Wilmington and Union schools participated.

With the guidance of team advisors, students studied and prepared for five different testing stations including Soils, Aquatics, Wildlife, Forestry and a Current Issue - Waste to Resources.

Wilmington Team 2 won First Place!

They were presented with the coveted Eagle Trophy, mini microscopes, rain gauges donated by NRCS, and day passes to Living Treasures Animal Park.

The team will represent Lawrence County at the PA Envirothon State Competition on May 25th at Camp Mt. Luther. We wish them the best of luck!



Second place was Laurel Senior Citizens and Third place was Laurel 11's. Both of those teams got Eagle Trophies and mini microscopes as well.



2nd Place Winners, Laurel Senior Citizens

Savannah Palmer, Tamra Miller, Cam Caldaro,
Tina Kineston, Matt Buchowski,
Team Advisor - Randy Harrold



3rd Place Winners, Laurel 11's

Dakota Weldon, Rian Hill, Corey Wilson,
Cody Wagner, Ainsley Stewart,
Team Advisor - Randy Harrold

All participating teams received Envirothon T-shirts, and posters donated by Lawrence/Mercer – Recycling and Solid Waste.

Thank You to Team Advisors, all of our Sponsors, Volunteers, and District Staff who made this day possible.

Volunteers running our testing stations included the following organizations: PA Game Commission,

PA Fish and Boat Commission, Lawrence /Mercer Recycling and Solid Waste Department,

Department of Conservation and Natural Resource (DCNR), and Natural Resources Conservation Service (NRCS).

A special Thank You goes out to Pizza Joes-Shenango for donating 5 pizzas toward our lunch, Al Burick and his team for having Shenango Park looking beautiful and Trophy Case LLC for the magnificent Eagle Trophies.





Summer Nature Camp – Registration Open!

Do you have a child that loves playing outside or is curious about nature? If this sounds like someone you know, then consider registering them for our Summer Nature Camp put together by the Lawrence County Conservation District



2022 Nature Camp

Nature Camp is a week long Day Camp designed for children **ages 8 - 12**, where they can learn and discover the uniqueness and importance of water, soil, trees, plants, wildlife and much more. We engage children in fun and interactive hands-on lessons, activities, games and crafts that allow them to explore their natural environment.

Nature Camp will be held **(Monday) July 25th to (Friday) July 29th** at Ewing Park in Ellwood City, PA from **9am - 2pm**. Pick up and Drop off will be at Shelter #8. Cost is **\$45/ camper** - this includes all activities, presentations, snacks and drinks.

Nature Camp is limited to 15 participants and will be on a first come, first serve basis.

Registration due by June 24th, 2022.

What you need to know:

1. You must provide transportation for your child.
2. Your child will need to bring a packed lunch each day. The fee does not cover lunch.
- Bottled water and snacks **WILL** be provided by the District.
3. Camp is outdoors, so make sure your child is dressed appropriately for both terrain and weather.
Flip-Flops/Crocks are **NOT** permitted.

To Register: fill out the online application at www.lawrenceccd.org or **detach the form at the end of this publication** and mail in or bring in application to the office with payment of \$45.00 per child. Cash or Check only.

Checks are to be made out to “Lawrence County Conservation District”.

We will contact you with additional information once your child is registered.

*A refund of tuition, due to cancellation, will be at the discretion of the Conservation District.
Also a \$20 service fee on all returned checks.*

This years Special Guest Presenters will include but not limited to

Naturalist , April Clause	Presentation with Live Animals
DCNR Forester, Dave Cole	Tree Identification and fun facts
Wild Edible Educator, Andrew Palumbo	Learn about plants you can snack on
Beekeeper, Ted Starmack	Safely see a working beehive
Tamarack Wildlife Rehabilitation	Lesson with Live Animals and information
Wish Upon a Butterfly, Andrea Hopper	Presentation with Live Butterflies and a butterfly release
National Resources Conservation Service	PA Game Commission
Penn State Extension 4-H Educator	Microbiologist

Donations Are Needed

Consider a Donation to our **Summer Nature Camps.**

Donations of Check or Cash can be mailed in or personally delivered to the Conservation Office.

Checks payable to *Lawrence County Conservation District or LCCD*

Credit Card Payments are also accepted through PayPal –

lcd@lawrenceconservationdistrict.org



2022 Summer Camp Registration Form

Parent / Guardian _____

Camper's Name _____

Street _____

City _____

State _____ ZIP _____

E-Mail _____

Phone _____

Birth Date _____

Grade Entering Fall 2022 _____

School Attended _____

**Mail Registration form and
payment of \$45/child to:
Lawrence County Conservation District
430 Court Street
New Castle, Pa 16101
724-656-2167 or 724-333-2817**

2022 Nature Camp

Campers Welcome

Ages 8 - 12

Due by June 24, 2022

T-Shirt Size:

****Please Circle size requested***

Youth Small

Youth Medium

Youth Large

Adult Small

Adult Medium

Adult Large

2022 Sponsors



It's why I'm here.

Michael G Joseph, Agent
1614 Highland Avenue
New Castle, PA 16105
Bus: 724-652-9806
www.agentmichaeljoseph.com

Your home and car are more than just things. They're where you make your memories – and they deserve the right protection. I get it. It's why I'm here. **LET'S TALK TODAY.**



State Farm Mutual Automobile Insurance Company
State Farm Fire and Casualty Company
Bloomington, IL

1706811



Preston Auto Group




LIVING TREASURES

WILD ANIMAL PARK



BEN FRANKLIN'S.

TAPROOM • GRILLE • BOTTLE SHOP

4270 US 422 | BENJAMIN FRANKLIN HWY



1223 East Washington St
New Castle, PA 16101
724-698-7259
RIARDOS.COM




1015 S. Mill St
New Castle, PA 16101
724-657-8149
FARAONEBROTHERS.COM




2650 Ellwood Rd., New Castle, PA 16101
724-658-9090

2022 - Board of Directors

Cliff Wallace - Chairman
Blane Sturgeon - Vice Chairman
Bruce Badger - Secretary
Dan Vogler - Treasurer
Don Hoye - Public Member
Phil Dean - Ag Member
Gary McConnell - Ag Member
Frank Romeo - Associate Director

Conservation District Staff

Joann McCready	District Manager
Mary Burris	Assistant Manager
Becca Naber	District Technician
Jillian Court	E & S Technician
Jeannie Shay	Watershed Specialist / Educator
	Agriculture Technician



FOLLOW US ON
facebook

Help our Facebook Grow!!

Invite your family and
friends to "Like"
our page as we strive for
2000 Followers
before January 2023!!!



Sponsorship Opportunity

Education efforts are made possible with your support and help sustain our organization and benefit the community we serve. Our goal is to educate and promote interest in the conservation of our natural resources to all community members.

Consider becoming a Sponsor today by filling out the form below and mailing it in with your selected donation amount.

Lawrence County Conservation District Sponsorship Form

Donor Information:

Business Name _____
Last Name, First Name _____
Street Address _____ City, State, Zip _____
Email _____ Phone _____

Donation Amount (please circle one) : \$1,000 \$500 \$250 \$100

* Please make check payable to **Lawrence County Conservation District**

* Any donations earning advertisement will be contacted for ad illustration.



LAWRENCE COUNTY
CONSERVATION DISTRICT