



# Dirt On the District

## Annual Photo Contest

For our 2022 Photo Contest, the district received over 80 individual photo submissions.

**First Place is awarded to Logan Slade with "Live Another Day"!**

Second Place is Shirley Seymour for "Tufted Titmouse".

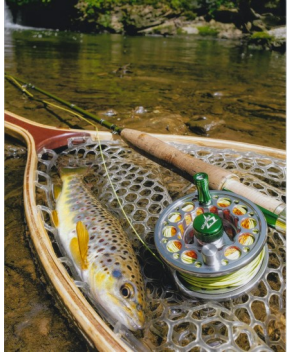
Third place goes to Marianne Hill with "Naturally Framed Falls".

Winning photos can be viewed on our website [www.lawrencecd.org](http://www.lawrencecd.org) as well as in the Courthouse Lobby along with several "Staff Picks".

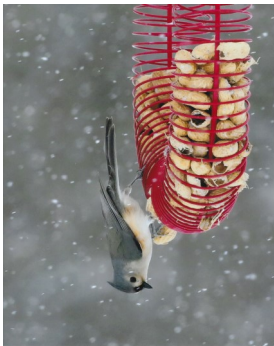
A special Thank You to the contest judges this year: Kim Koller-Jones - Director of Arts & Education at the Hoyt, Laura Bordanaro - Recording Specialist at Register & Recorder Office, and JoAnn McCready - Retired Conservation District Manager.

Congratulations to all our winners and a Thank You to everyone who participated!!

Start taking photos now and consider entering the 2023 Photo Contest!



Logan Slade  
"Live Another Day"



Shirley Seymour  
"Tufted Titmouse"  
(Bird is upside down)



Marianne Hill  
"Naturally Framed Falls"



## Lawrence County Conservation District

430 Court Street  
New Castle, PA 16101

Phone: 724-652-4512

Fax: 724-657-2008

E-mail: [lcd@lawrencecd.org](mailto:lcd@lawrencecd.org)

Website: [www.lawrencecd.org](http://www.lawrencecd.org)

## Spring Tree Seedling Sale

Every year the Conservation District distributes thousands of trees, shrubs and plants through our Tree Seedling Sale. The annual sale is now open for orders.

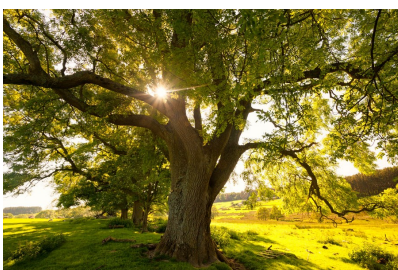
**Deadline to place order is March 31st, 2023.**

Order forms can be accessed on our website at [www.lawrencecd.org](http://www.lawrencecd.org)

Click the tab "**Get Involved**" then "**Annual Seedling Sale**".

Simply fill out the form and either mail in with payment or use the PayPal option and email your form and receipt to [mburris@lawrencecd.org](mailto:mburris@lawrencecd.org).

Pick-up will be held **Saturday April 15th, 2023 from 9:00am - 12:00pm** at the County Warehouse, 202 Milton Street (next to Lawrence County Jail).



Proceeds from the Tree Seedling Sale fund our  
Environmental Education Programs.



@Lawrence County  
Conservation District



Instagram  
LCCD\_DOD

## Annual Awards Luncheon

Lawrence County Conservation District hosted its Annual Awards Luncheon and FFA Demonstration on Wednesday January 4th at the Grace United Methodist Ministry Church. This year was a full house of attendees. Representatives from State Rep Marla Brown's, Senator Michele Brooks and Senator Elder Vogel Jr.'s office were among the guests. Cooperating agencies were also represented from Penn State Extension, County Commissioners, Lawrence/Mercer Recycling & Solid Waste, National Resource Conservation Service, USDA, and several of our volunteer Rainfall Monitors.

Mary Burris, District Manager and Cliff Wallace, Board Director facilitated the proceedings of the luncheon. After introductions, awards were presented. Each award was accompanied by a PA Senate Citation for their significant contribution to the community and the environment.



Stewart Family

Mitchell Whiting, Ag Technician, presented the **2022 "Conservation Farm Award"** to Leonard Stewart and Family.

Jerry Zona, Director and Megan Gahring, Deputy Director of the Lawrence/Mercer Recycling and Solid Waste, received the **2022 "Environmental Education Award"**



Law/Mercer Recycling & Solid Waste: Megan Gahring and Jerry Zona

Jeannie Shay, Watershed Specialist, presented the 2022 **"Environmental Health Partnership Award"** to Dennis and Pam Stich.



Pam and Dennis Stich



Jo Ann McCready  
- Retired District Manager

Our final award was presented by Mary Burris, District Manager, to Jo Ann McCready as the **"Conservation Service Award"** for her 32 years of service.

After lunch, catered by Farone Brothers Catering, Wilmington Area FFA Chapter presented their Demonstration "Slow Burn".

This was their opportunity to practice before the State Competition at the Pennsylvania Farm Show.

They placed 3rd in the State with their demonstration!

Members of the Laurel FFA Chapter also attended the luncheon.

Special Thank you to Faraone Brothers for catering our event and Trophy Case LLC. for creating our beautiful Awards!



Wilmington Area FFA Chapter



Laurel Area FFA Chapter  
Rian Hill, Cody Wagner and Corey Wilson



Kaitlynn Reimers, David Roberts,  
Parker McCrumb and Jenni Sholler

## Dirt, Gravel, and Low Volume Road Program

### Wilmington and Slippery Rock Township Awarded DGLVR Grants

The Lawrence County Conservation District's Board of Directors awarded two project grants through the Dirt, Gravel, and Low Volume Road Program for projects in Slippery Rock and Wilmington Township for this construction season. Funding for the projects will focus on addressing lessening the Township's maintenance cycle by providing environmentally sensitive infrastructure improvements to two roadways. Wilmington Township will receive \$252,000 for work on Phillip's School Road and Slippery Rock Township will receive \$160,000 for work on Muddy Creek Road.



Outlet and "scour" hole at downstream side of the existing culvert pipe under Phillip's School Road.

Efforts in Wilmington Township will be on the replacement of a failing stream culvert on Phillips School Road. Currently, the pipe under the roadway is too small for the stream system and is causing maintenance issues and damaging the stream. Becca Naber, District Technician, working with the Wilmington Township Board of Supervisors, met in early 2022 to view the site and discuss the stream crossing.

Work throughout 2022, including cooperation with Frank B. Taylor Engineering and technical guidance from Penn State's Center for Dirt and Gravel Road Studies, identified the problems at the site. As a result, an estimate and several field surveys that assessed the structure and up stream area were completed.

Construction of the new crossing will commence as soon as the design work and all of the permits are obtained. The new crossing is planned to be a much larger structure with a width that will provide enough room to reestablish the stream under the road. Allowing the stream enough room under the roadway allows for numerous

benefits including less possibility of flooding/overtopping of the structure, less maintenance of the culvert and providing the stream the opportunity to flow through the opening without being obstructed and restricted by the culvert itself. Opening the stream up will allow for better climate resilience to large storm events, natural movement of bed load and connection of the area for species that move throughout the length of the stream.

In addition to the work on Phillip's School Road, the District is actively working with Slippery Rock Township to complete work on Muddy Creek Road. Muddy Creek Road has several steep portions and is challenged by varying topography. Stormwater is trapped within the road itself and causes continual maintenance and contributing sediment to the Slippery Rock Creek. Work on Muddy Creek Road is planned to include use of fill material, base drainage, replacement of some undersized pipes, adjustment of the road's cross section and use of a stable road surface material called Driving Surface Aggregate. Conservation District staff will be working with the Township's residents on the road to "tie in" their home's driveways to the new road profile. Construction work on Muddy Creek Road is anticipated to start in the fall of 2023.

A section of Muddy Creek Road where water is trapped in the road causing wet ditches and potholes.



If your municipality is interested in the program, please reach out to Becca Naber, District Technician, at the Conservation District office at 724-652-4512, or [bnaber@lawrenceccd.org](mailto:bnaber@lawrenceccd.org).

## [Chapter 102/105 Permitting Consultant Workshop](#)

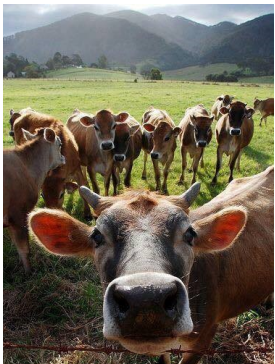
Northwest Region Conservation Districts and PA Department of Environmental Protection hosted a Consultant Workshop on February 22, 2023 at Trinity Point Church of God in Clarion, PA. The workshop focused on common issues seen in National Pollution Discharge Elimination System (NPDES) permit applications. Additional topics covered were managed release concept, infiltration requirements and stormwater discharge points.

The workshop was a success with approximately one hundred engineering consultants and district staff attending. Jefferson County Conservation District staff presented the top 10 common deficiencies permit reviewers find in NPDES applications. Staff from Monroe County Conservation District spoke about the importance of infiltration testing, location of discharge points, calculating off-site stormwater discharge, completing post construction stormwater management credits worksheets, and tips on designing managed release concept stormwater management facilities. Additionally, Center for Dirt Gravel and Low Volume Roads (DGLVR) presented on recent updates and stream crossing designs.

Thank you to PA Department of Environmental Protection staff and Armstrong, Butler, Clarion, Crawford, Elk, Erie, Forest, Indiana, Jefferson, Lawrence, McKean, Mercer, Monroe, Venango, and Warren conservation districts for working together to host this workshop.



Contact Erosion Technician **Jillian Court** at [jcourt@lawrencecd.org](mailto:jcourt@lawrencecd.org) or **724-714-3315** if you would like to be added to the mailing list for next year's Consultant Workshop.



## [Agricultural Conservation Assistance Program - ACAP](#)

Agriculture is an integral part of Pennsylvania's culture, heritage, and economy. It also serves, when done correctly, as a natural filter, soaking up rainfall and runoff before it reaches Pennsylvania's creeks and the Bay downstream. But farmers need help to implement critical conservation practices to clean up the Commonwealth's waters. The new Agricultural Conservation Assistance Program (ACAP) will provide a true statewide cost-share program to help them implement practices that keep healthy soils and nutrients on their land and out of waterways.

### **What Is ACAP?**

Enacted as part of the Clean Streams Fund legislation (SB 832/HB 1842), ACAP invests \$154 million to establish a statewide program that will be directed locally by county conservation districts. The program will provide financial resources to farmers to install conservation practices that work best for each farm and technical assistance funding to the conservation district to support farmer requests.

The result: healthy soils, clean water, thriving local economies to name a few—for the benefit of all Pennsylvanians.

### **How ACAP Will Work**

In early 2023 ACAP funding will be distributed to county conservation districts based on areas with the greatest need for improvement. County conservation districts will work with participating farmers and landowners, or with non-governmental organizations and farm consultants, to help design and implement soil and water conservation practices that will work best for each farm's unique circumstances.

We are still accepting applications for this program. Please contact Mitchell Whiting, Ag Technician, if you are interested in finding out more about ACAP - [mwhiting@lawrencecd.org](mailto:mwhiting@lawrencecd.org)





LAWRENCE COUNTY'S  
**EARTH DAY**

**SATURDAY, APRIL 22, 2023**



**10 AM – 2 PM ~ EWING PARK, ELLWOOD CITY**

**Horse & Trolley Rides**

**Food ~ Vendors ~ Activities**

**Educational Exhibits ~ Local Entertainers**

**SPECIAL PRESENTATION BY**



**SPONSORED BY**



**[WWW.FACEBOOK.COM/EARTHDAYLAWCO](http://WWW.FACEBOOK.COM/EARTHDAYLAWCO)**

# Nature Camps SAVE THE DATE

Do you have a child that loves playing outside or is curious about nature?  
If this sounds like someone you know, then consider registering them for our

## **Summer Nature Camp**

hosted by the Lawrence County Conservation District .

**July 24th - July 28th**  
**at Shenango Park in New Castle 9am - 2pm**

**Registration will open in May - Limited to 15 campers**

Nature Camp is a week long day-camp designed for **children ages 8-11**, where they can learn and discover the uniqueness and importance of water, soil, trees, plants, wildlife and much more. We engage children in fun and interactive hands-on lessons, activities, games and crafts that allow them to explore their natural environment.

### **\*\*\* New for 2023 - Advanced Nature Camp \*\*\***

Advanced Nature Camp will consist of 3 days - each at a different location designed for **children ages 12-16**. Each location will focus on a different aspect of nature including Stream Health/Macroinvertebrates, plant & tree ID, pollinators, geology and safe hiking.

**June 27th - June 29th 9am - 2pm**

**Locations will include McConnell's Mill State Park,  
Shenango Park and Hell's Hollow Trail.**

**Registration will open in May - Limited to 15 campers**

Keep an eye on our Social Media and Webpage for additional information.

[Any questions email - jshay@lawrenceccd.org](mailto:jshay@lawrenceccd.org)



## Sponsorship Opportunity

**Our mission is to educate and promote interest in the conservation of our natural resources to all community members.**

**Education efforts are made possible with your support and help sustain our organization and benefit the community we serve.**

### Lawrence County Conservation District Sponsorship Form

#### **Donor Information:**

**Business Name** \_\_\_\_\_

**Last Name, First Name** \_\_\_\_\_

**Street Address** \_\_\_\_\_ **City, State, Zip** \_\_\_\_\_

**Email** \_\_\_\_\_ **Phone** \_\_\_\_\_

**Donation Amount (please circle one) : \$1,000    \$500    \$250    \$100**

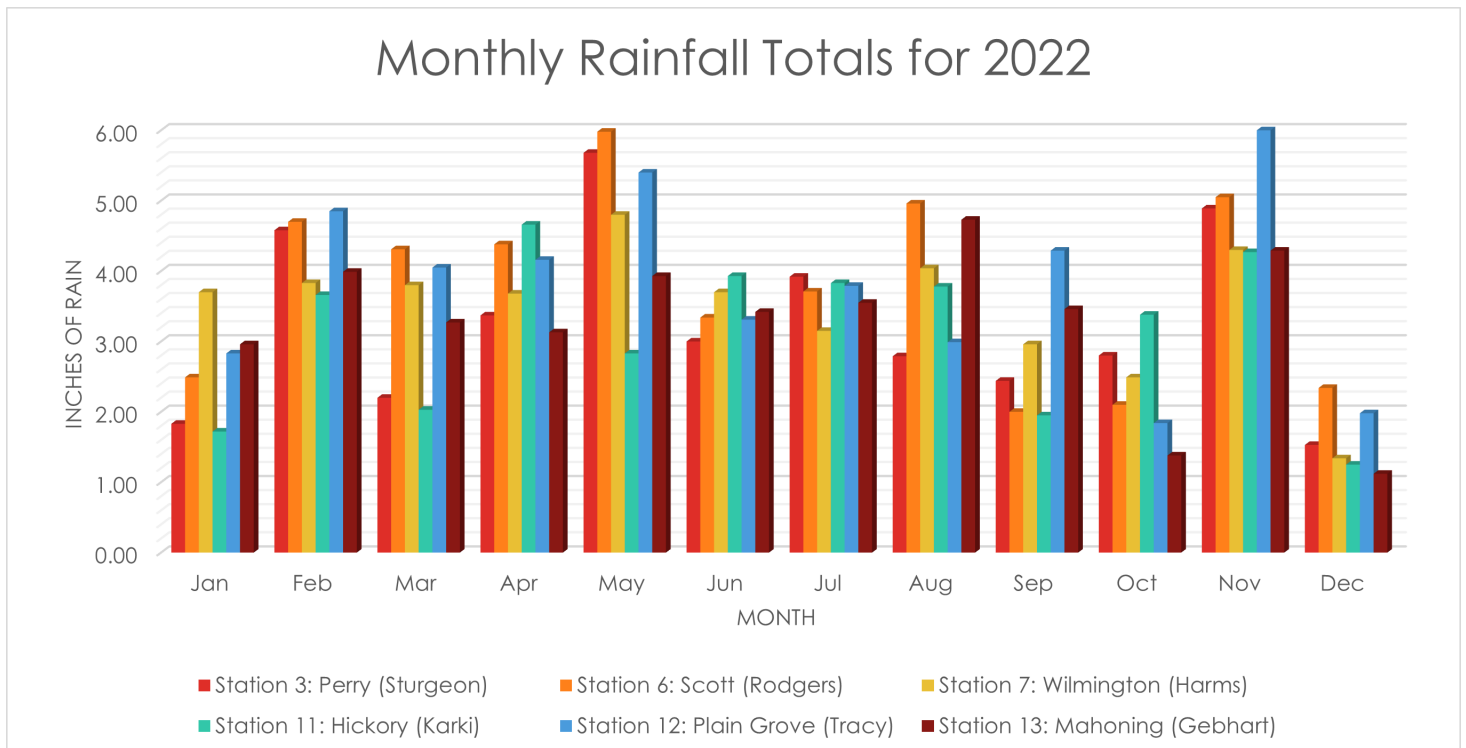
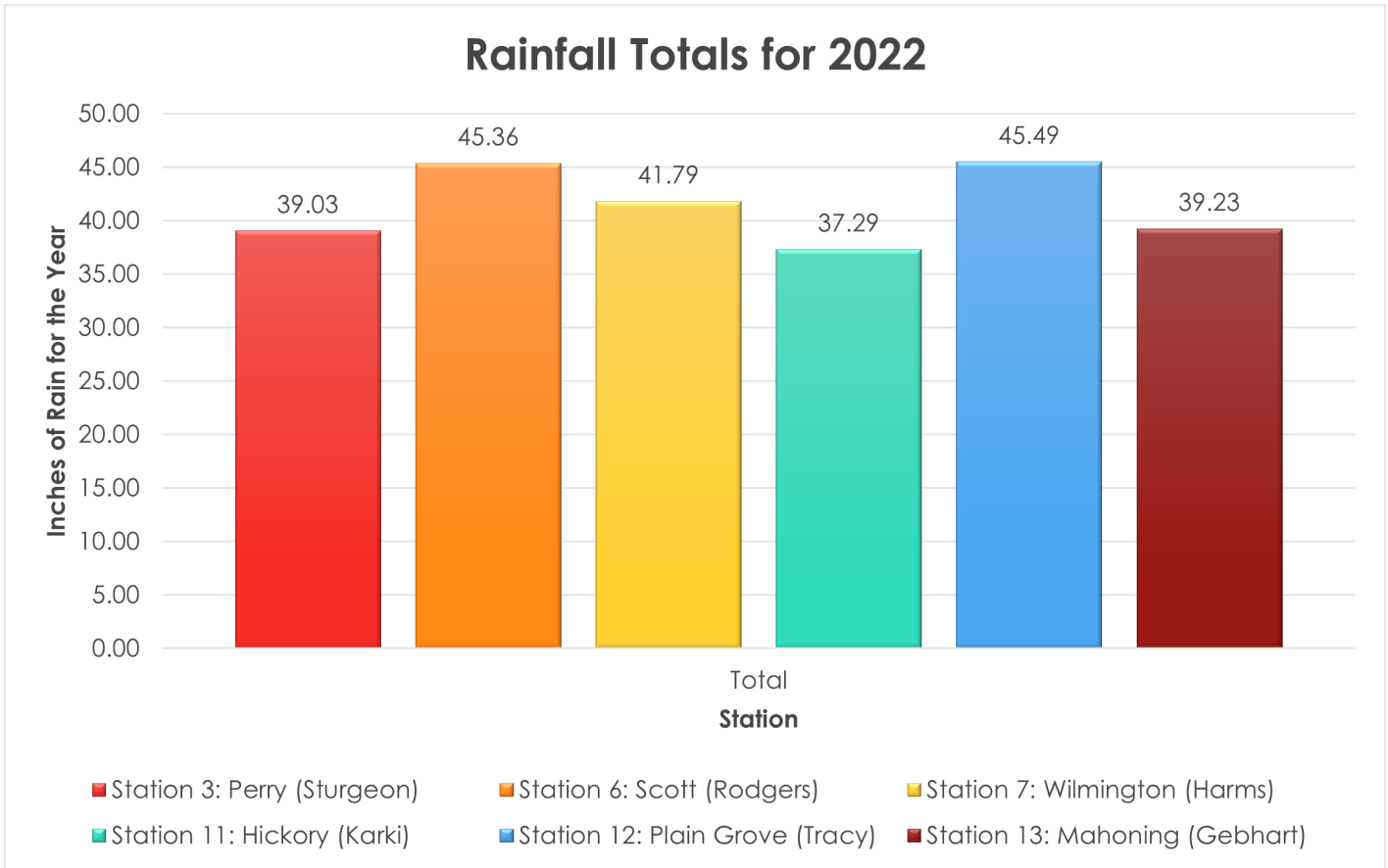
*\* Please make check payable to **Lawrence County Conservation District***

*\* Any donations earning advertisement will be contacted for ad illustration.*

## [Rainfall Data for 2022](#)

Each year we collect data from our rainfall monitoring volunteers across the county. In 2022 we had six active participants. What they documented is illustrated below. As you can see it was a very wet year with a total 3 to 4 inches most months of the year. Bringing our average annual totals to roughly 40 inches of rain observed at each location during 2022.

If you are interested in becoming a Rainfall Monitor Volunteer, contact Jeannie Shay, Watershed Specialist, at [jshay@lawrencecd.org](mailto:jshay@lawrencecd.org) or 724-656-2167.





## Spotted Lanternfly (SLF) Lawrence County in Quarantine Zone

The Spotted Lanternfly (SLF) is a serious invasive pest with an appetite for our many of our plants including grapevines, maple trees, black walnut, birch, willow, and other trees. The feeding damage significantly stresses the plants which can lead to decreased health and potentially death. As SLF feeds, the insect excretes honeydew (a sugary substance) which can attract bees, wasps, and other insects. The honeydew also builds up and promotes the growth of sooty mold (fungi), which can cover the plant, forest understories, patio furniture, cars, and anything else found below SLF feeding. In February 2023, Agriculture Secretary Russell Redding announced that six counties have been added to Pennsylvania's SLF quarantine zone ahead of the 2023 spring hatch. **Lawrence County is now part of that quarantine zone.**

Doing our part is as simple as inspecting all personal items to be moved from within the quarantined area. SLF can hitchhike on any object at any life stage. Adult SLF can hold onto vehicles moving at 65 MPH, and egg masses that look like a splash of mud can be hidden on any surface, easily blending in and moving with you anywhere in the Commonwealth and beyond. To ensure SLF are not being transported, check all vehicles, trailers, campers and other equipment thoroughly, including around front and rear windshield wipers, grills, roof racks, wheel wells and truck beds. Any items (including but not limited to plant material, woody debris, firewood, lawn furniture, construction supplies, tools and other equipment) intended to be moved, whether within or outside the quarantine, must also be inspected.

Businesses that operate in or travel through quarantined counties are required to obtain a spotted lanternfly permit. Pennsylvanians who live inside the quarantine zone should also review and sign the Compliance Checklist for residents found on the Pennsylvania Department of Agriculture [https://www.agriculture.pa.gov/Plants\\_Land\\_Water/PlantIndustry/Entomology/spotted\\_lanternfly](https://www.agriculture.pa.gov/Plants_Land_Water/PlantIndustry/Entomology/spotted_lanternfly)

For more information on spotted lanternfly, visit [agriculture.pa.gov/spottedlanternfly](https://www.agriculture.pa.gov/spottedlanternfly)

To report a sighting of spotted lanternfly, visit <https://extension.psu.edu/have-you-seen-a-spotted-lanternfly>

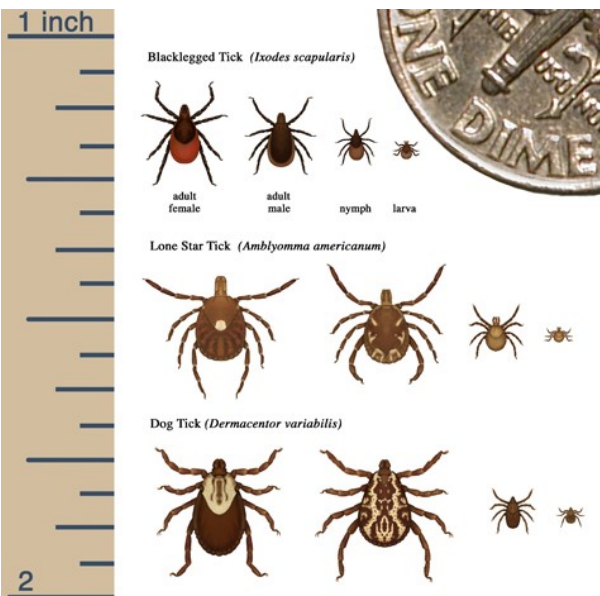


## Tick Talk

Spring is right around the corner and that means tick season is upon us. It is time to break out your permethrin spray and light colored clothing as ticks become active once the temperature reaches about 40 degrees. Lawrence County has had an unseasonably warm winter which could result in a bad year for ticks.

Black-legged ticks, the primary carrier for Lyme Disease, lay their eggs in spring and then transition into a nymph stage the following spring. Nymphs can be as small as a poppy seed and sit dormant in leaf litter until the weather warms. They will crawl up tall grasses and quest, or hold out their front legs, to find their next host. Nymphs are difficult to spot on animals and humans due to their size.

Remember to use an EPA-approved repellent like Permethrin, wear light colored long pants and long sleeved shirts, and check yourself and pets for ticks before going in to the house.







Preston Auto Group



### 2023- Board of Directors

- Cliff Wallace - Chairman
- Bruce Badger - Vice Chairman
- Dan Vogler - Secretary
- Phil Dean - Treasurer
- Don Hoye - Public Member
- Blane Sturgeon - Ag Member
- Gary McConnell - Ag Member
- Frank Romeo - Associate Director

### Conservation District Staff

- |                  |                        |
|------------------|------------------------|
| Mary Burris      | District Manager       |
| Becca Naber      | District Technician    |
| Mitchell Whiting | Agriculture Technician |
| Jillian Court    | E & S Technician       |
| Jeannie Shay     | Watershed Specialist   |

**Michael G Joseph, Agent**  
 1614 Highland Avenue  
 New Castle, PA 16105  
 Bus: 724-652-9806  
 www.agentmichaeljoseph.com

Your home and car are more than just things. They're where you make your memories – and they deserve the right protection. I get it. It's why I'm here. **LET'S TALK TODAY.**

**State Farm®**

State Farm Mutual Automobile Insurance Company  
 State Farm Fire and Casualty Company  
 Bloomington, IL  
 1706811



Help our Facebook Grow!!

Invite your family and friends to "Follow" our page as we strive for **1400 Followers** before **January 2024!!!**



LAWRENCE COUNTY CONSERVATION DISTRICT