



Dirt On the District

Annual Nature Photo Contest

We are accepting entries for the **2023 Photo Contest**.
Entries will be accepted until **January 12th, 2024**

In an effort to support the conservation of our natural resources, we believe it is important to allow the public an opportunity to showcase what they feel are Lawrence County's finest natural resources.

To participate in the Annual Nature Photo Contest you can find an entry form and contest rules on our website www.lawrenceccd.org. All entries can be mailed or personally delivered to the Lawrence County Conservation District Office.



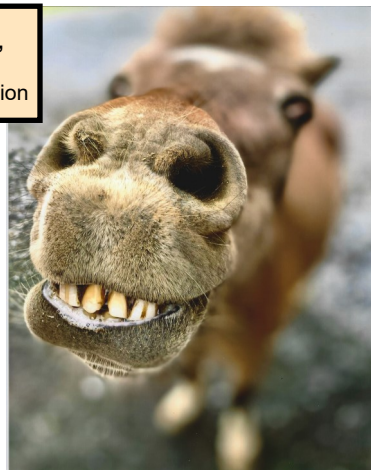
Lawrence County Conservation District

430 Court Street
New Castle, PA 16101
Phone: 724-652-4512
Fax: 724-657-2008
E-mail: lcd@lawrenceccd.org
Website: www.lawrenceccd.org



Jennifer Slade
"Icy Perch"
2022 Honorable Mention

Heidi Lindsay
"Horsing Around"
2022 Honorable Mention



Thank you for helping our Facebook page Grow!!

We reached our 2023 goal and surpassed 1400 followers
in the month of July!

Will you help us reach **1500** before the end of December?
Invite your family and friends to "LIKE" our Facebook Page



@Lawrence County
Conservation District



Instagram
LCCD_DOD

Lawrence County West Nile Program

The Lawrence County West Nile Program Coordinator, Jillian Court, set up an information booth at Ellwood City's Wander Ellwood event on June 21st along Lawrence Avenue.

"Fight the Bite" was the primary message to learn how to repel and reduce mosquito and tick habitats. Educational materials such as how to reduce mosquito habitat around the home, facts about Blacklegged ticks, coloring pages and more were available to the public. A variety of mosquito and tick repellents were showcased in addition to mosquito dunks which are used to kill mosquito larvae in standing water. Four tick specimens were displayed (Blacklegged tick, American Dog tick, Asian Long-horned tick, and Lone Star tick) allowing the public to see the size of each life stage.



Come see us at our upcoming events where we will be giving away mosquito dunks and tick removal tools while supplies last.

UPCOMING EVENTS:

August 14-19: Lawrence County Fair

September 22: Lawrence County Senior Expo

September 23: National Hunting and Fishing Day event at Castlewood Rod & Gun Club

September 30: Ellwood City Fall Fest & Car Cruise

Resource Enhancement And Protection (REAP) Program

The 2023-24 REAP Application packet is now available and the State Conservation Commission will be **accepting 2023-24 REAP applications from August 7th - October 31, 2023.**

- REAP is a first-come, first-served program that enables farmers, businesses, and landowners to earn PA income tax credits to offset the cost of implementing conservation practices. Tax credits provided by the REAP program helps farmers off-set the costs of implementing best management practices (BMPs) that benefit their farms and work to protect water quality at the same time.
- **What's new for 2023-2024**
- Increased focus on multi-species cover crops and cover crop equipment; including cover crop drones.
- Precision nutrient application plans
- Silvopasture systems
- No-till and nutrient application equipment upgrade kits
- **Funding Opportunities**
- REAP provides tax credits at levels of 50%, 75%, or 90% of costs incurred in the implementation of BMPs that reduce nitrogen, phosphorus, and sediment pollution.



**For detailed information contact
Agriculture Technician, Mitchell Whiting at mwhiting@lawrencecd.org or 724-761-3094**

Chapter 102 Erosion & Sediment Control

There are many factors that affect erosion such as soil characteristics, vegetative cover, topography, and climate. For example, soils with greater fine sand and silt content are the most erodible whereas soils with more organic matter improves stability. Also, vegetative cover is important to reduce soil erodibility because the vegetation's roots hold the soil particles in place. These factors are complicated further when construction activities take place.

Erosion Problems Associated with Construction Sites

Land development often expose soils to increased stormwater runoff. The shaping of land for construction purposes changes the soil characteristics which is detrimental to infiltration and runoff patterns. Erosion can be increased to 10 or more times the natural rate which can be harmful to surrounding properties and receiving waterways.

There are serious potential hazards that can occur due to a construction project including:

- Increased exposure of soil to erosive forces.
- Increased volumes of stormwater runoff, accelerated erosion and sediment yield, and higher peak flows caused by:
 - ⇒ Removal of vegetation.
 - ⇒ Exposure of underlying soil which are more erodible than the surface soil.
 - ⇒ Soils reduced capacity to absorb rainfall due to compaction by heavy equipment.
 - ⇒ Enlarged drainage areas caused by grading and stormwater conveyance facilities.
 - ⇒ Prolonged exposure of disturbed areas due to scheduling problems.
- Alteration of the groundwater regime which affects drainage systems, slope stability and vegetative survival.
- Exposure of subsurface materials that are unfavorable to the establishment of vegetation.

Erosion best management practices (BMPs) and post-construction BMPs are implemented to mitigate these hazards.



How to Apply for NPDES Permits

NPDES permits are required for earth disturbances greater than 1 acre.

Step 1: Contact an environmental engineer for assistance filling out the application.

Step 2: Visit DEP's "E&S Resource" webpage for permitting forms and instructions. www.dep.pa.gov.

Step 3: Visit our website at www.lawrencecd.org to download LCCD's E&S Pollution Control Plan Fee Schedule.

**Contact E&S Technician
Jillian Court at
jcourt@lawrencecd.org
or 724-714-3315 with
questions.**

Small Business Resource Fair

On May 17th Governor Shapiro, DEP Secretary Negrin, Ag Secretary Russell Redding and others attended a Small Business Resource Fair hosted at the Darlington Township Firehall. The event offered a direct connection for small businesses, farmers, and residents to the resources they need in recovering from the impacts of the Norfolk Southern train derailment in East Palestine, Ohio. The District along with Beaver County Conservation District, were invited to attend. We met with several local residents and business owners to offer our support.



Secretary Negrin, Jeannie Shay, Mary Burris, Governor Shapiro, Cliff Wallace, Secretary Redding

Norfolk Pays Pennsylvania

Lawrence County received \$340,000 as part of the \$1 Million Community Relief Fund provided to Beaver and Lawrence counties in the aftermath of the East Palestine Train Derailment.

The Lawrence County Commissioners allocated \$105,000 of these funds to the LCCD to assist local residents and businesses.

The Conservation District is developing a Mini-Grant Program that will provide funding up to \$5,000 per application.

Details will be available in the coming months.

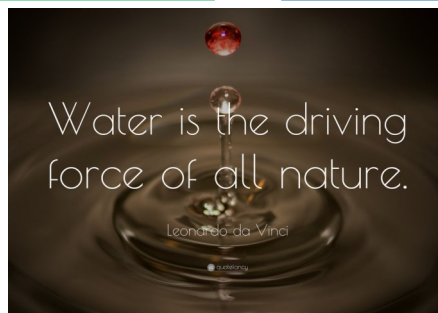
Be sure to follow our Facebook page and check our Webpage at www.lawrencecd.org

District Hires New Technician

The Conservation District would like to welcome a new member to the team.

Freddy Smith will start his new position with the District mid August as our new Dirt, Gravel, Low Volume Road (DGLVR) Technician as well as Watershed Specialist support.

For more information about participating in our DGLVR programs, please contact Freddy Smith at fsmith@lawrencecd.org or 724-656-2462



Rain Barrel and Backyard Composting Workshop

June 7th, 2023, Watershed Specialist, Jeannie Shay, in cooperation with Jerry Zona and Megan Gahrng from the Lawrence/Mercer Recycling & Solid Waste Department, hosted a public workshop funded through a grant. Topics included Watersheds, Stormwater Management, Nonpoint Source Pollution, Rain Barrels, and Backyard Composting. The workshop was held outside at the Lower East Side Community Garden. Education included why all of this is important to our homes, community and overall environment.

Financial and other support for this project is provided by the Pennsylvania Association of Conservation Districts, Inc. through a grant from the Pennsylvania Department of Environmental Protection under Section 319 of the Clean Water Act, administered by the U.S. Environmental Protection Agency.



40 attendees came from all around the area and beyond. Each person had the opportunity to choose from a Compost Bin or a Rain Barrel to implement at home. This provided the ability to utilize the newly gained knowledge.



Jerry Zona, Director of Lawrence/Mercer Recycling & Solid Waste Dept.



Megan Gahrng, Assistant Director of Lawrence/Mercer Recycling & Solid Waste Dept.



Kenny Rice gave a tour of the Community Garden, Edible Rain Garden and active composting bins. The tour tied together all the information provided.

Thank you to Kenny Rice and Bible Way Church for allowing us this ideal location for parking and to host our event.

Overall the workshop was a success and we couldn't have asked for nicer weather!



2023 Local Envirothon

LCCD hosted it's annual Envirothon competition at Shenango Park on May 2nd, 2023. Union, Wilmington and Laurel school districts competed for the coveted Eagle Trophy and the opportunity to represent Lawrence County at the PA State Envirothon.

The early spring weather offered more of a challenge than the tests, but we all survived the chilly curveball by sharing blankets, coats and hand warmers. Between testing students took to the playground to warm up.

Congratulations to our **1st place winners, Laurel Team D&D!!!**

Second place was awarded to Laurel Team DeWalt and third place was Wilmington Area FFA Environerds. All teams gave an excellent effort!



A Pizza Party Lunch was provided by the District sourced from our local Shenango Pizza Joe's.

Eagle trophies were awarded to the top three winners. Thank you to Trophy Case LLC.



Dillon Dugan, Cheyenne Holben, Matthew Houk, Maelee Hill, Henry Perdue

Volunteering to help facilitate the five testing stations (Forestry, Wildlife, Soil, Aquatics, & Current Issue) were representatives from the DCNR Forestry Department, PA Game Commission, PA Fish & Boat Commission, Lawrence/Mercer Recycling & Solid Waste Dept., and NRCS Soil Conservationist. Regional DEP Representative helped with score keeping.

Laurel Team D&D represented Lawrence County at the PA State Envirothon May 25th at Camp Mount Luther.

Each participant received an Envirothon T-Shirt and sunglasses courtesy of the LCCD.

Thank you to all our sponsors, students, advisors, supporting staff, station volunteers, District Staff and Shenango Park Staff for helping to make our Envirothon a successful event.



2023 Nature Camp Summary

This year the LCCD hosted both an **Advanced Nature Camp**, for ages 12-16, and our **Summer Nature Camp**, for ages 8-11. We could easily fill 10 pages or more with details of each camp day and photos. Instead, we encourage you to check out our Facebook page and County Fair Display, where details of presenters, activities and participants from each day are highlighted with pictures from both camps.

Camps were both so successful, that the parents want in on the fun! So.... May of 2024 we will start offering an **Adult Nature Camp** for ages 18+. It is likely to be planned on a Thursday, Friday Saturday at different locations across Lawrence County - possibly multiple locations in a day. Stay tuned for details in early 2024.

Nature Camp Thank You

We really appreciate all who helped and supported our Nature Camps!

To the families of the campers: moms & dads, grandparents, neighbors and sitters, your help with transportation, packing lunches and towels is appreciated.

To this year's volunteers - **Morgan Swab and Julie Cunningham.**

Your support was crucial to the overall success of keeping all campers safe and cared for.

The entire Conservation District staff helps with planning, education, and facilitation.

With that said, a special thanks to Jillian Court, E&S Technician, for her active role in both camps this year.



Mitchell Whiting, Jillian Court, Mary Burris, Jeannie Shay, Julie Cunningham and Morgan Swab



Volunteers : Morgan Swab and Julie Cunningham

Special Thanks to all of our presenters during Advanced Nature Camp

Natalie Simons - DCNR Educator

Jim Schneider - Native American Indian Historian

Shane Brenneman - PA Game Commission Forester

Jeannie Shay - Watershed Specialist/Educator

Special Thanks to all of our presenters during Summer Nature Camp

Andrew Palumbo - Wild Edible Educator

Ted Starmack - Local Beekeeper

Bryan Crable - Professor of Microbiology

Jim Schneider - Native American Indian Historian

April Claus - Naturalist

Andrea Hooper - Wish Upon A Butterfly

Tamara O'Brien - Plant It Further

Joy Wilson - Penn State Extension Master Gardener

PA Game Commission

Tamarack Wildlife Center

Jeannie Shay - Watershed Specialist/Educator

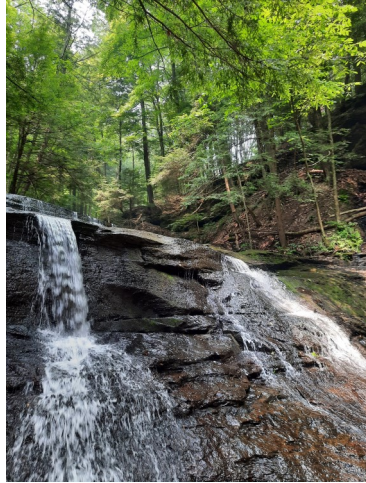
2023 Nature Camp continued

Nature Camp is our fastest growing education outreach program currently. The Conservation District is a non-profit organization and has successful programming with support from public donors, annual sponsors and cooperating agencies.

Thank you to all the supporting and cooperating agencies and business that helped support camp season this year.

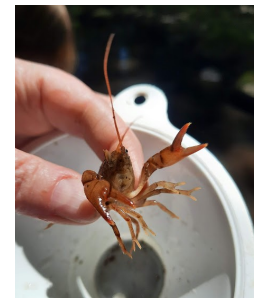
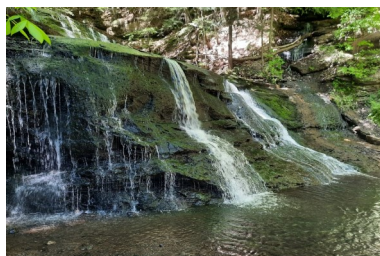
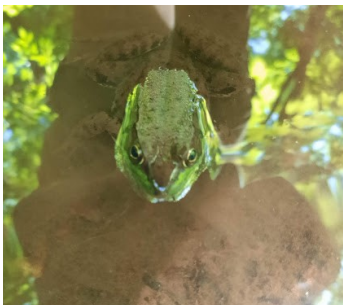
**Shenango Park and Township Supervisors
Sunny Day Treats LLC. Ice Cream Truck
Casey K. Creations
Shenango Pizza Joe's
Shenango Township Volunteer Fire Department**

Thank you to our 2023 Sponsors



Creek Critters with "Wild + Free Lawrence County" Homeschool

Early in May, the local chapter of "Wild + Free" homeschool group reached out to Jeannie Shay, Watershed Specialist/Environmental Educator and asked for a lesson about Aquatic Macroinvertebrates. Jeannie facilitated a lesson at Hell's Hollow Trail, which is part of McConnell's Mill State Park. The group started with Watershed Basics and moved into Water Quality. From there students investigated all the "Creek Critters" residing in Big Run. Students found such a diversity of salamanders, crayfish, mayflies (both nymph and adult), stonefly nymphs, larvae, minnows, frogs, a snake and more!





It's why I'm here.

Michael G. Joseph, Agent
1614 Highland Avenue
New Castle, PA 16105
Bus: 724-652-9806
www.agentmichaeljoseph.com

Your home and car are more than just things. They're where you make your memories – and they deserve the right protection. I get it. It's why I'm here. **LET'S TALK TODAY.**



State Farm Mutual Automobile Insurance Company
State Farm Fire and Casualty Company
Bloomington, IL

1706811



2650 Ellwood Rd., New Castle, PA 16101

724-658-9090



Preston Auto Group



2023- Board of Directors

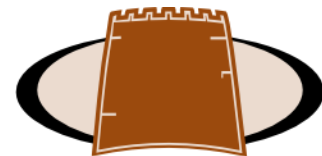
- Cliff Wallace - Chairman
- Bruce Badger - Vice Chairman
- Dan Vogler - Secretary
- Phil Dean - Treasurer
- Don Hoye - Public Member
- Blane Sturgeon - Ag Member
- Gary McConnell - Ag Member
- Frank Romeo - Associate Director

Conservation District Staff

- | | |
|------------------|-----------------------------------|
| Mary Burris | District Manager |
| Jillian Court | E & S Technician |
| Mitchell Whiting | Agriculture Technician |
| Jeannie Shay | Watershed Specialist/
Educator |



NORTH MEMORIAL
Animal Hospital



TERVO MASONRY



LAWRENCE COUNTY
CONSERVATION DISTRICT