



Dirt On the District

Spring - Tree Seedling Sale

Every year the Conservation District distributes thousands of trees, shrubs and plants through our **Tree Seedling Sale**.

The annual sale is now open for orders.

Deadline to place order is March 22nd, 2024. Order forms can be accessed on our website at www.lawrenceccd.org Click the tab "Get Involved" then "Annual Seedling Sale". Simply fill out the form and either mail in with payment or use the PayPal option and email your form and receipt to mburris@lawrenceccd.org.

**Pick-up will be held Saturday April 13th, 2024
from 9:00am - 12:00pm**

at the County Warehouse, 202 Milton
Street next to Lawrence County Jail).

Proceeds from the Tree Seedling Sale fund our
Environmental Education Programs.



Earth Day Celebration - Save the Date

Lawrence County's Earth Day Celebration

Saturday April 20th, 2024
10am - 2pm Ewing Park
in Ellwood City

EARTH DAY

Food - Vendors - Activities
Paper Shredding - Plastic Bag Collection
Trashion Show - Art & Photography Show
Educational Exhibits - Local Entertainers
And Much More!



Lawrence County Conservation District

430 Court Street
New Castle, PA 16101

Phone: 724-652-4512

Fax: 724-657-2008

E-mail: lcd@lawrenceccd.org

Website: www.lawrenceccd.org



FOLLOW US ON
facebook

@Lawrence County
Conservation District



Instagram
LCCD_DOD

Annual Nature Photo Contest - Winners!

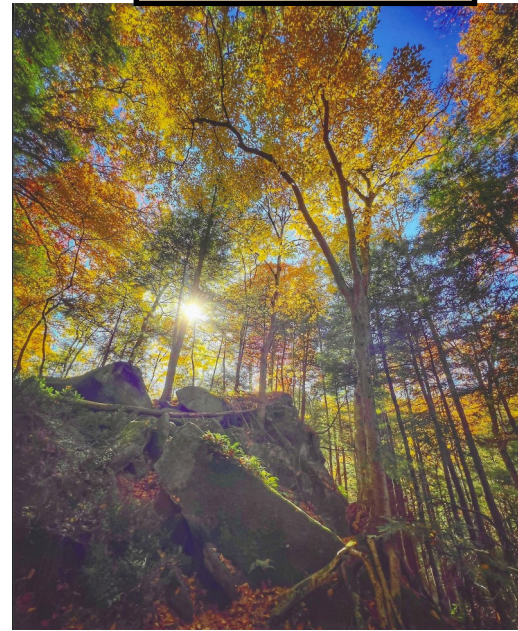
Judi Jackson
"Sunshine on My Shoulder"
2023 First Place

The District received 57 photo entries for our 2023 Nature Photo Contest. First Place is awarded to **Judi Jackson with "Sunshine on My Shoulder"**! Second Place is **Heidi Lindsay for "Baaad to the Bone"**. Third place goes to **Leanna Miller with "Washed by the Rain"**.

Winning photos can be viewed on our website - www.lawrencecd.org as well as in the Courthouse Lobby along with several "Staff Picks". The photo display will also be available for viewing at all our 2024 public events including the Sportsmen's Night Out, Lawrence County Fair week and Ellwood City Fall Festival.

A special Thank You to the contest judges this year: Kim Koller-Jones - Director of Arts & Education at the Hoyt, JoEllen Thomas - Courthouse Law Librarian, and JoAnn McCready - Retired Conservation District Manager.

Congratulations to all our winners and a Thank You to everyone who participated!!



Leanna Miller
"Washed by the Rain"
2023 3rd Place



It's never too early to start submitting photos for the 2024 Photo Contest! Rules and submission forms are available at www.lawrencecd.org click "Get Involved" then "Annual Nature Photo Contest".

Heidi Lindsay
"Baaad to the Bone"
2023 Second Place



The District received such quality photos this year that the judges couldn't help but pick six Honorable Mentions this year.

"Did you get my good side?" Grace Chapman
"Family Moment" & "Baby Blue Eyes" Frank Pisano
"Teething Tom" Heidi Lindsay
"Dying Fall" Dawn Shaffer
"Not for Wrent" April Bobbert

LCCD Mini Grant Program - Application Closed

At the January 2024 Board of Directors meeting, the Lawrence County Conservation District awarded the remaining funds in our mini grant program. The District has awarded \$105,000 to 25 grant applicants for projects around Lawrence County.

We will be adding posts and project photos as they are completed. The Mini Grant was established to distribute funds provided to the County by Norfolk Southern Railway as a result of the East Palestine train derailment.



Annual Awards Luncheon

The Lawrence County Conservation District hosted its Annual Awards Luncheon and FFA Demonstration on Thursday January 4th, 2024 at the Grace United Methodist Church in New Castle. In addition to Board Members and District Staff, attendees included; County Commissioners – Dan Vogler, Chris Sainato, and Dan Kennedy - State Representative Marla Brown and representative for Senator Michele Brooks. Cooperating agencies were also represented from PA DEP, Penn State Extension, National Resource Conservation Service, USDA, Lawrence/Mercer Recycling and Solid Waste, and several of our volunteer Rainfall Monitors .



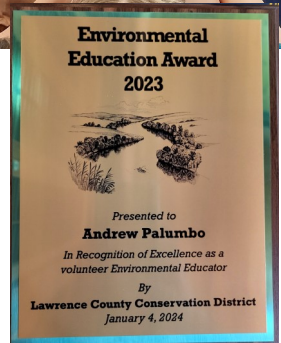
Cliff Wallace, board member, facilitated the proceedings of the luncheon. We welcomed Keynote Speaker – Scott Barth with B&B Farms. His presentation educated the room on the significance of using modern technology to help with farming costs and the reduction of environmental impacts. For their extensive implementation of technology, **B&B Farms were presented with the "Conservation Farm Award"**.

Andrew Palumbo received the "Environmental Education Award" for his efforts in volunteering and educating our youth during Summer Nature Camp. Each year he brings a morning snack that is primarily from items he and his family have foraged and processed. Some examples include sumac tea, chestnut flour fritters with maple syrup, scones with elderberry & blackberry jam, clover flower tea and an apple crisp.



Cliff Wallace was recognized for his efforts in advocating for local farm communities following the East Palestine train derailment. With his help, farms were able to get water and soil testing accomplished. He received the **"Conservation Service Award"**.

Each award was accompanied by a Senate Citation for their significant contribution to the community and the environment.



After lunch, five FFA teams presented their Demonstrations as practice for the PA State Farm Show in Harrisburg.

Mohawk - "Unmanned Aerial Vehicles"

Wilmington FFA Team 2 - "All Fed Up"

Wilmington FFA Team 1 - "All Cooped Up"

Laurel FFA Team 1 - "Animal Identification- Who is Who?"

Laurel FFA Team 2 - "How to Saddle Up a Western Horse "

Results at the Pennsylvania State Farm Show

Laurel FFA Team 1 - Third Place

Wilmington FFA Team 2 - Seventh Place

Laurel FFA Team 2 - Ninth Place

Wilmington FFA Team 1 - Eleventh Place

Mohawk FFA - Twelfth

****Photos of the teams can be viewed on
our Facebook page****

**Special Thank you to Faraone Brothers for catering the delicious lunch and
Trophy Case LLC. for creating our beautiful Awards!**

Chapter 102 NPDES Permit Announcement

**** Attention all permittees who currently have a development/earth disturbance project covered under a **
National Pollution Discharge Elimination System (NPDES) permit.**

The PAG-02 General Permit will expire on December 7, 2024. DEP expects that Notices of Intent (NOIs) to remain covered under the reissued PAG-02 General Permit will be required, and those NOIs will be due to the DEP or county conservation district office that approved original coverage by December 7, 2024. DEP expects to provide a streamlined renewal NOI form for this purpose. This form will not be available until PAG-02 is reissued (the current estimate is Fall 2024). Permittees that do not have Notice of Termination (NOT) approval by December 7, 2024 will need to submit a renewal NOI. However, DEP and county conservation districts cannot accept renewal NOIs for PAG-02 until DEP publishes the final reissued PAG-02 General Permit.

The Lawrence County Conservation District will notify all permittees when the renewal NOI is available.

**You may contact Erosion & Sedimentation Technician,
Jillian Court at jcourt@lawrenceccd.org or 724-656-2474
with any questions.**



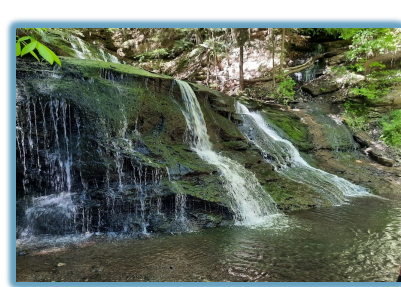
Dirt Gravel and Low Volume Road Program

Muddy Creek Road Project

Completed late summer of 2023, Freddy Smith, District DGLVR Technician in cooperation with Slippery Rock Township, completed driving surface and drainage improvements to Muddy Creek Road. Poor drainage through long ditches and buried stream paths led to the roadway washing away and sediment flowing into the Slippery Rock Creek. Working with Slippery Rock Township, \$160,814.95 in grant funding was utilized to provide significant improvements to both the roadway and drainage path. Included in this project were, improved routing for stormwater using a new catch basin, upgrades to 3 existing cross-pipes including new head and endwalls, and 2 new cross-pipes and over 750 feet of road ditch reworked with underdrain and stone. Road base improvements and new driving surface was also added and stabilized. These included a graded road cross section and installation of the program's DSA specialized aggregate blend. Several areas of bank stabilization were also installed. The municipality contributed \$6,497.43 (in-kind) to this project and further improvement on the roadway has been discussed.

**If interested in the DGLVR
Program for your area,
please contact District
Technician, Freddy Smith at
fmsith@lawrenceccd.org
or 724-656-2462 with any
questions.**





Nature Camps

SAVE THE DATE



The Conservation District will be offering three different Nature Camps in 2024. Each will be designed to further knowledge and appreciation for our natural environment as campers are offered hands-on lessons, crafts, games, hiking and more. Two camps will utilize multiple locations of Lawrence County. Details will be posted on our webpage and social media as they become available.

- ♦ **June 25th - 27th Advanced Nature Camp (ANC)**
Campers ages 12-17
 - Opportunity to explore multiple parks around the county
- ♦ **July 22nd - 26th Summer Nature Camp (SNC)**
Campers ages 8-11
 - Camp will be held at Shenango Park
- ♦ **September 5th - 7th Grown-up Nature Camp (GNC)**
Campers ages 18+
 - Opportunity to explore multiple parks around the county



Spending time
in *nature*
is healing *energy*

Additional information can be found at www.lawrencecd.org

Be sure to "Like" us on Facebook for real time notifications.



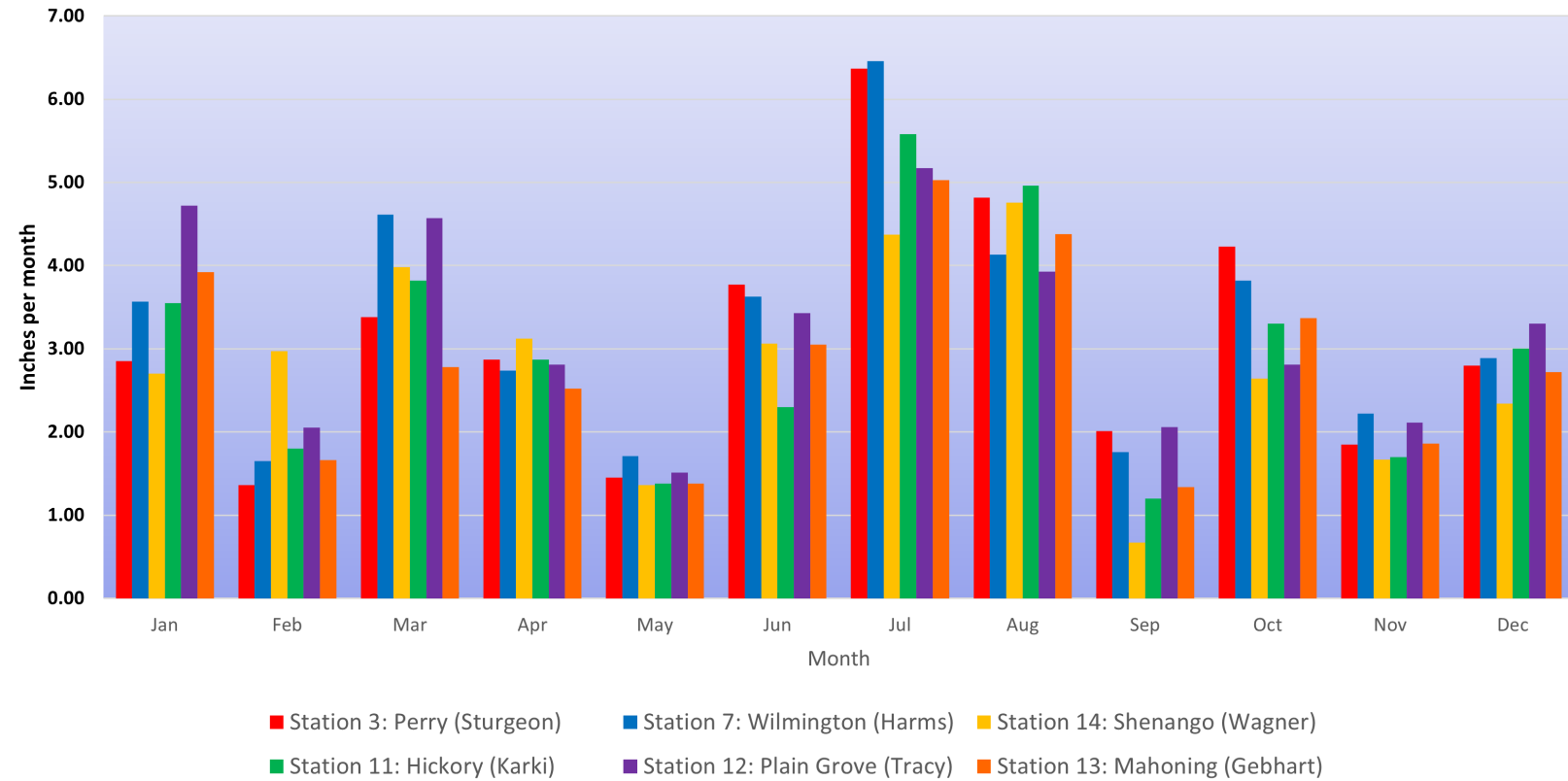
Ask anyone what their best childhood memories are. I bet they are all outside, playing in the long grass, making huts, climbing trees, going camping....

2023 Rainfall Monitoring

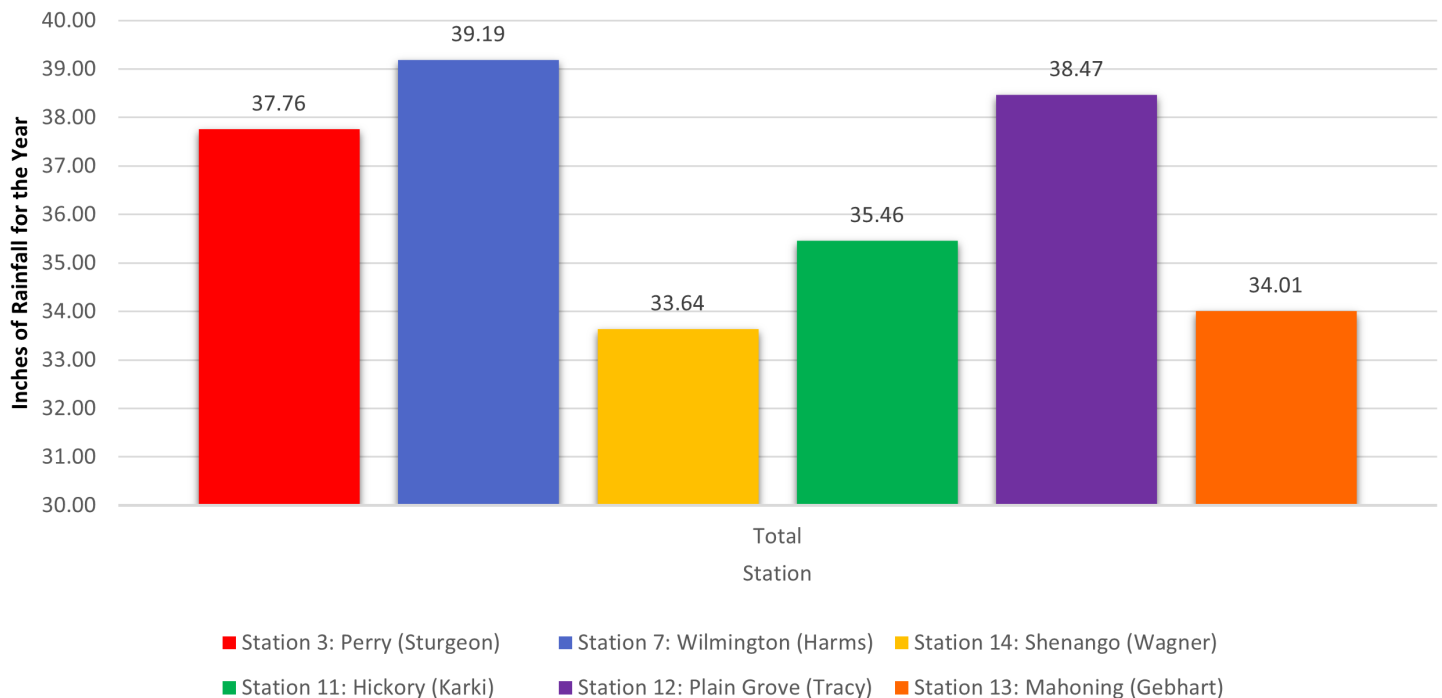
Each year volunteers across the county collect rainfall data and send in results to the District. In 2023 we had six active participants. Rainfall totals collected are illustrated below. July was our wettest month of the year with an average of almost five inches of rain across the county and close to seven inches in two different townships.

The District is seeking two new Rainfall Monitor Volunteers. We will provide the rain gauge, instructions, and data cards. If interested please contact Jeannie Shay, Watershed Specialist, at js Shay@lawrencecd.org or 724-656-2167.

2023 Monthly Rainfall Data



Rainfall Totals for 2023





Spotted Lanternfly (SLF) Lawrence County in Quarantine Zone

The Spotted Lanternfly (SLF) is a serious invasive pest with an appetite for our many of our plants including grapevines, maple trees, black walnut, birch, willow, and other trees. The feeding damage significantly stresses the plants which can lead to decreased health and potentially death. As SLF feeds, the insect excretes honeydew (a sugary substance) which can attract bees, wasps, and other insects. The honeydew also builds up and promotes the growth of sooty mold (fungi), which can cover the plant, forest understories, patio furniture, cars, and anything else found below SLF feeding. In February 2023, Lawrence County was added to Pennsylvania's SLF quarantine zone.

Doing our part is as simple as inspecting all personal items to be moved from within the quarantined area. SLF can hitchhike on any object at any life stage. Adult SLF can hold onto vehicles moving at 65 MPH, and egg masses that look like a splash of mud can be hidden on any surface, easily blending in and moving with you anywhere in the Commonwealth and beyond. To ensure SLF are not being transported, check all vehicles, trailers, campers and other equipment thoroughly, including around front and rear windshield wipers, grills, roof racks, wheel wells and truck beds. Any items (including but not limited to plant material, woody debris, firewood, lawn furniture, construction supplies, tools and other equipment) intended to be moved, whether within or outside the quarantine, must also be inspected.

Businesses that operate in or travel through quarantined counties are required to obtain a spotted lanternfly permit. Pennsylvanians who live inside the quarantine zone should also review and sign the Compliance Checklist for residents found on the Pennsylvania Department of Agriculture

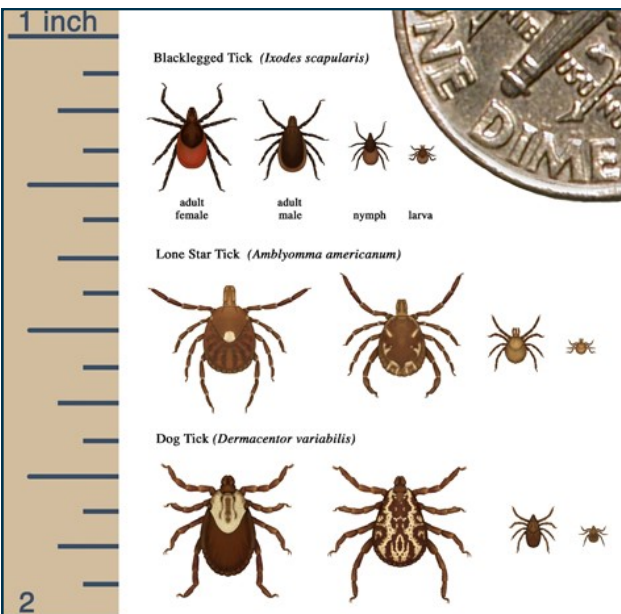
https://www.agriculture.pa.gov/Plants_Land_Water/PlantIndustry/Entomology/spotted_lanternfly

For more information on spotted lanternfly, visit agriculture.pa.gov/spottedlanternfly

To report a sighting of spotted lanternfly, visit <https://extension.psu.edu/have-you-seen-a-spotted-lanternfly>



Tick Talk



Spring is right around the corner and that means tick season is upon us. It is time to break out your permethrin spray and light colored clothing as ticks become active once the temperature reaches about 40 degrees. Black-legged ticks, the primary carrier for Lyme Disease, lay their eggs in spring and then transition into a nymph stage the following spring. Nymphs can be as small as a poppy seed and sit dormant in leaf litter until the weather warms. They will crawl up tall grasses and quest, or hold out their front legs, to find their next host. Nymphs are difficult to spot on animals and humans due to their size.

Remember to use an EPA-approved repellent like Permethrin, wear light colored long pants and long sleeved shirts, and check yourself and pets for ticks before going in to the house.





**It's why
I'm here.**

Michael G. Joseph, Agent
1614 Highland Avenue
New Castle, PA 16105
Bus: 724-652-9806
www.agentmichaeljoseph.com

Your home and car are more than just things. They're where you make your memories – and they deserve the right protection. I get it. It's why I'm here.
LET'S TALK TODAY.



State Farm Mutual Automobile Insurance Company
State Farm Fire and Casualty Company
Bloomington, IL

1706811



Preston Auto Group



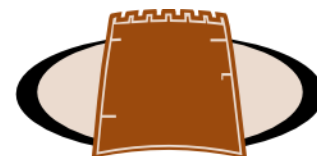
2024- Board of Directors

Blane Sturgeon - Chairman
Dan Vogler - Vice Chairman
Phil Dean - Secretary
Gary McConnell - Treasurer
Don Hoye - Public Member
Bruce Badger - Public Member
Cliff Wallace - Ag Member
Amanda McDowell - Associate Director

Conservation District Staff

Mary Burris	District Manager
Jillian Court	E & S Technician
Mitchell Whiting	Agriculture Technician
Freddy Smith	DGLVR Technician
Jeannie Shay	Watershed Specialist/ Environmental Educator

**CENTRAL
Heating AND Plumbing**



TERVO MASONRY



LAWRENCE COUNTY
CONSERVATION DISTRICT